

アジレント 年度末バイアルキャンペーン

今年もやります！
バイアル・バイアル関連製品のまとめ買いにご利用ください。

キャンペーン対象製品

バイアル、キャップ、セプタム、ウェルプレート、シーリングマット、オートクリンパ、マニュアルクリンパ



キャンペーン対象製品例

部品番号	品名	個数	価格 (円、税別)
5182-0714	スクリーバイアル, 2 mL, 広口, 透明, 100 個	1/pk	¥3,300 → キャンペーン価格 ¥2,640
5188-6535	スクリーバイアル, 2 mL, 広口, 茶色, 100 個	1/pk	¥3,300 → キャンペーン価格 ¥2,640
5185-5824	青スクリーキャップ, 圧着, スリット入 PTFE/ シリコン, 100 個	1/pk	¥5,600 → キャンペーン価格 ¥4,480
5185-5823	青スクリーキャップ, 圧着, PTFE/ シリコン, 100 個	1/pk	¥3,900 → キャンペーン価格 ¥3,120
5190-2288	20 mL, ヘッドスペースバイアル, 目盛 & ラベル付, 透明, 100 個	1/pk	¥6,900 → キャンペーン価格 ¥5,520
5183-4474	ヘッドスペースクリンパバイアル, 丸底, 20 mL, 透明, 100 個	1/pk	¥6,200 → キャンペーン価格 ¥4,960
5183-4478	セプタム付 20 mm クリンパキャップ, 安全構造 PTFESi, 100 個	1/pk	¥11,000 → キャンペーン価格 ¥8,800
5043-9308	InfinityLab 96 ウェルプレート, 1.2 mL, 丸型, U 字, 高さ 27 mm	25/pk	¥24,000 → キャンペーン価格 ¥19,200
5191-5616	A-Line オートクリンパ, 11 mm, リチウムイオンバッテリー付	1/pk	¥128,000 → キャンペーン価格 ¥102,400
5191-5614	A-Line オートデキャッパ, 11 mm, リチウムイオンバッテリー付	1/pk	¥128,000 → キャンペーン価格 ¥102,400

※掲載製品以外にもキャンペーン対象製品があります。詳しくはお問い合わせください。

キャンペーン内容

キャンペーン対象バイアルおよびバイアル関連製品をお買い上げいただけると、
キャンペーン期間中何度でも定価より **20%OFF** でご提供いたします。

キャンペーン期間：2025年3月28日まで

※ご注文をお申し付けいただく際、**キャンペーンコード 2999** とご連絡ください。

キャンペーンコード 2999
対象製品はこちら



<https://aglt.co/yearend2024-25>

お願い/注意事項

※在庫状況により、納入までにお時間を頂く場合がございます。納期に余裕を見てご注文のご検討をお願いします。
※本リーフレット記載の『希望販売価格』『キャンペーン価格』は参考価格であり、販売店からの実際の販売価格ではございません。
ご注文の際には販売店様へご確認くださいませようお願い申し上げます。
※部品の在庫状況によって、キャンペーンの終了が早まる、またはキャンペーン対象外となる製品が出てくる可能性があります。



Trusted Answers

PFAS 分析の成功はバイアルから PFC フリーポリプロピレンバイアル

パーフルオロおよびポリフルオロアルキル物質 (PFAS) は、環境中に広く見られる残留性有機汚染物質のグループです。米国環境保護庁 (USEPA) や国際標準化機構 (ISO)などの国際的、国内的、または地域機関の規制に従って、微量レベルの濃度で分析することは、人々をこれらの曝露から保護するために必要です。

アジレントは、PFOS/PFAS 分析のために PFC フリーの各種消耗品を発売しました。

新製品の PP (ポリプロピレン) 各種バイアルは、PFOS/PFAS HPLC 分析で便利にお使いいただけます。



キャンペーン対象製品例

部品番号	品名	価格 (円、税別)
5191-8122	〈New〉ポリプロピレン, PFC フリー, クリンブ/スナップバイアル, 2 mL, 認定, 100 個	¥2,800 → キャンペーン価格 ¥2,240
5191-8124	〈New〉ポリプロピレン, PFC フリー, クリンブ/スナップバイアル, 2 mL, 認定, 500 個	¥13,000 → キャンペーン価格 ¥10,400
5182-0542	透明ポリプロピレンスナップキャップ, ソリッドポリエチレンメンブレンセプタム, 100 個	¥1,700 → キャンペーン価格 ¥1,360
5181-1513	スナップキャップ PEO (耐薬品性ポリエチレンオレフィン), 白色, 500 個	¥9,800 → キャンペーン価格 ¥7,840
5191-8121	〈New〉ポリプロピレン, PFC フリー, スクリューバイアル, 2 mL, 認定, 100 個	¥2,700 → キャンペーン価格 ¥2,160
5191-8123	〈New〉ポリプロピレン, PFC フリー, スクリューバイアル, 2 mL, 認定, 500 個	¥13,000 → キャンペーン価格 ¥10,400
5191-8151	透明ポリプロピレン, スクリューキャップ, PP/シリコンセプタム, 9 mm, 100 個	¥1,800 → キャンペーン価格 ¥1,440

※掲載製品以外にもキャンペーン対象製品があります。詳しくはお問い合わせください。

キャンペーン内容

キャンペーン対象バイアルおよびバイアル関連製品をお買い上げいただけますと、キャンペーン期間中何度でも定価より **20%OFF** でご提供いたします。

キャンペーン期間: 2025年3月28日まで

※ご注文をお申し付けいただく際、**キャンペーンコード 2999** とご連絡ください。

キャンペーンコード 2999
対象製品はこちら



<https://aglt.co/yearend2024-25>

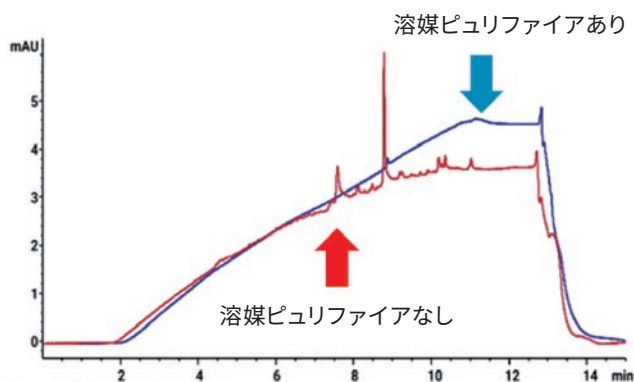
アジレント・テクノロジー株式会社
DE-002970
〒192-8510 東京都八王子市高倉町 9-1
フリーダイヤル 0120-477-111
www.agilent.com/chem/jp

 **Agilent**
Trusted Answers

アジレント LC サプライ品 年度末キャンペーン

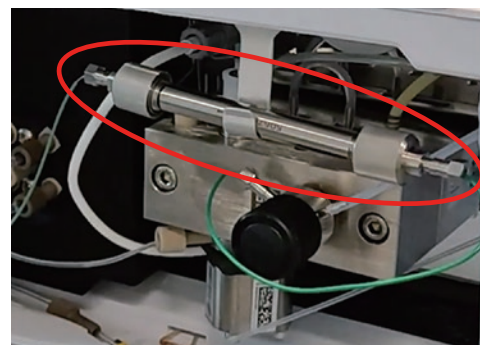
LC サプライが期間限定でお得です！

新製品 ゴーストピークを除去し、HPLC 溶媒不純物の問題を解消
InfinityLab クイックチェンジ溶媒ピュリファイア



Mobile phases: A: Water, B: Acetonitrile
Gradient: 0-1 min. 5% B 1-10 min 5-95% B 10-12 min 95% B 12-12.5 min 95-5% B
Detection: UV (225 nm, BW 4 nm, Ref.: 360 nm BW 100 nm), 10 Hz, 10 mm, 1 μ L MaxLight Flowcell
Separation column: InfinityLab Poroshell 120 EC-C18, 2.1 x 100 mm, 2.7 μ m (695575-902)
Temperature: Room temperature

※イオンペア逆相、LC/MS には推奨しておりません



工具不要の手締めで簡単交換

コネクタからキャピラリーを外す必要はありません。
「カチッ」と音が鳴るまで締めれば取付完了です。

ミキサーとオートサンプラの間に接続するゴーストピーク除去用クリーニングカートリッジです

部品番号	品名	価格 (円、税別)
5067-1620	クイックチェンジ溶媒ピュリファイア アセンブリ 2.1 x 20 mm	¥82,000 → キャンペーン価格 ¥65,600
5067-1621	クイックチェンジ溶媒ピュリファイア アセンブリ 3.0 x 75 mm	¥82,000 → キャンペーン価格 ¥65,600
5067-1622	クイックチェンジ溶媒ピュリファイア アセンブリ 4.6 x 50 mm	¥82,000 → キャンペーン価格 ¥65,600
5432-0062	クイックチェンジ溶媒ピュリファイア カートリッジホルダクリップ, 1 個	¥4,500 → キャンペーン価格 ¥3,600

※掲載製品以外にもキャンペーン対象製品があります。詳しくはお問い合わせください。

キャンペーン内容

キャンペーン対象 LC サプライをお買い上げいただくと、
キャンペーン期間中何度でも定価より **20%OFF** でご提供いたします。

キャンペーン期間：2025年3月28日まで

※ご注文をお申し付けいただく際、**キャンペーンコード 3042** とご連絡ください。

キャンペーンコード 3042
対象製品はこちら



<https://aglt.co/yearend2024-25>

お願い/注意事項

※在庫状況により、納入までにお時間を頂く場合がございます。納期に余裕を見てご注文のご検討をお願いします。
※本リーフレット記載の『希望販売価格』『キャンペーン価格』は参考価格であり、販売店からの実際の販売価格ではございません。
ご注文の際には販売店様へご確認くださいませようお願い申し上げます。
※部品の在庫状況によって、キャンペーンの終了が早まる、またはキャンペーン対象外となる製品が出てくる場合がございます。

 **Agilent**
Trusted Answers

InfinityLab セーフティキャップ、パージボトル

移動相や廃液、および複数のラインを溶媒でパージする洗浄時などに、溶媒の蒸発を防ぐことは、分析者の健康にとって重要です。



部品番号	品名	価格 (円、税別)
5043-1217	セーフティキャップ, GL45 1 ポート	¥12,000 → キャンペーン価格 ¥9,600
5043-1218	セーフティキャップ, GL45 2 ポート	¥14,000 → キャンペーン価格 ¥11,200
5043-1340	セーフティスターキットおよびセーフティパージボトル ※キャップ×4 (5043-1217 × 3, 5043-1218 × 1), タイムストリップ付き ベントバルブ 5043-1190 × 4, フィッティング 3.2 mm × 4	¥64,000 → キャンペーン価格 ¥51,200

※掲載製品以外にもキャンペーン対象製品があります。詳しくはお問い合わせください。

InfinityLab クイックコネクットフィッティング

InfinityLab クイックコネクットフィッティングは、手締めで接続した後、レバーを閉じることで 130 MPa まで使用可能です。



部品番号	品名	価格 (円、税別)
5067-5961	クイックコネクットフィッティングアセンブリ 0.075 × 105 mm	¥45,000 → キャンペーン価格 ¥36,000
5067-5957	クイックコネクットフィッティングアセンブリ 0.12 × 105 mm	¥45,000 → キャンペーン価格 ¥36,000
5067-5958	クイックコネクットフィッティングアセンブリ 0.12 × 150 mm	¥45,000 → キャンペーン価格 ¥36,000

※アセンブリは、フィッティング, キャピラリー, フェラルのセットになります。

※掲載製品以外にもキャンペーン対象製品があります。詳しくはお問い合わせください。

InfinityLab クイックチェンジインラインフィルタ

カラムの詰まりを防止し、寿命を延ばすインラインフィルタとクイックターンフィッティングが一体型になりました。

カラムの接続が手締めで可能です。手締め 60 MPa、工具締めで 130 MPa 対応。



部品番号	品名	価格 (円、税別)
5067-1606	クイックターンフィッティング付きクイックチェンジインラインフィルタアセンブリ (内径 4.6 mm, 0.5 μm のフィルタディスク 5 個を含む)	¥72,000 → キャンペーン価格 ¥57,600
5067-1607	クイックターンフィッティング付きクイックチェンジインラインフィルタアセンブリ (内径 2.1 mm, 0.2 μm のフィルタディスク 5 個を含む)	¥72,000 → キャンペーン価格 ¥57,600
5067-1610	内径 2.1 mm, 0.2 μm のフィルタディスク, 5 個	¥23,000 → キャンペーン価格 ¥18,400
5067-1611	内径 2.1 mm, 0.5 μm のフィルタディスク, 5 個	¥23,000 → キャンペーン価格 ¥18,400
5067-1613	内径 4.6 mm, 0.5 μm のフィルタディスク, 5 個	¥23,000 → キャンペーン価格 ¥18,400

※掲載製品以外にもキャンペーン対象製品があります。詳しくはお問い合わせください。

ガスフィルタ・カートリッジ 年度末キャンペーン

年度末の機器メンテナンスの際、 ガスフィルタ・カートリッジを交換しましょう。

アジレントのガスフィルタ製品は、クリーンなガスを供給し、
カラムの損傷や感度の低下、機器のダウンタイムといったリスクを低減します。



キャンペーン対象製品例

部品番号	品名	価格 (円、税別)
ガススクリーンフィルタスタータキット		
CP736530	ガススクリーンフィルタキット, 1/8 インチ, 4 ポジション	¥258,000 → キャンペーン価格 ¥206,400
CP17976	ガススクリーン GC/MS フィルタキット, 1/8 インチ, 1 ポジション	¥116,000 → キャンペーン価格 ¥92,800
コネクティングユニット (カートリッジベース) (島津 GC 3 mm 配管用) ※島津 GC でも同じカートリッジが使用可能です。		
CP7988P3	コネクティングユニット, 1 フィルタ, ステンレス, 3 mm 用	¥89,000 → キャンペーン価格 ¥71,200
ガススクリーンフィルタ交換用カートリッジ ※インジケータの色が変わっていたら交換です。		
CP17971	ガススクリーン水分除去フィルタ	¥29,000 → キャンペーン価格 ¥23,200
CP17972	ガススクリーンチャコールフィルタ	¥33,000 → キャンペーン価格 ¥26,400
CP17973	ガススクリーン GC/MS フィルタ	¥43,000 → キャンペーン価格 ¥34,400
大型ユニバーサルトラップ ※1年に1回の交換が目安です。		
RMSH-2	大型ユニバーサルトラップ, ヘリウム, GC/MS 用, 1/8 インチ	¥55,000 → キャンペーン価格 ¥44,000
BHT-4	大型炭化水素トラップ, 750 cc, 1/4 インチ用	¥49,000 → キャンペーン価格 ¥39,200
S 字トラップ ※1年に1回の交換が目安です。		
5060-9084	コンディショニング済み水分トラップ, 1/8 インチ	¥39,000 → キャンペーン価格 ¥31,200
5060-9096	コンディショニング済み炭化水素トラップ, 1/8 インチ	¥49,000 → キャンペーン価格 ¥39,200

※掲載製品以外にもキャンペーン対象製品があります。詳しくはお問い合わせください。

キャンペーン内容

キャンペーン対象ガスフィルタ・カートリッジをお買い上げいただけると、
キャンペーン期間中何度でも定価より **20%OFF** でご提供いたします。

キャンペーン期間: 2025年3月28日まで

※ご注文をお申し付けいただく際、**キャンペーンコード 3042** とご連絡ください。

キャンペーンコード 3042
対象製品はこちら



<https://aglt.co/yearend2024-25>

お願い/注意事項

※在庫状況により、納入までにお時間を頂く場合がございます。納期に余裕を見てご注文のご検討をお願いします。
※本リーフレット記載の『希望販売価格』『キャンペーン価格』は参考価格であり、販売店からの実際の販売価格ではございません。
ご注文の際には販売店様へご確認くださいませようお願い申し上げます。
※部品の在庫状況によって、キャンペーンの終了が早まる、またはキャンペーン対象外となる製品が出てくる場合がございます。

アジレント GC・GC/MS 製品の最新情報

8850 ガスクロマトグラフ

7010D トリプル四重極 GC/MS

“Small Size, Big Impact”

Agilent 8850 GC システム

最高の圧力/流量コントロール (EPC)

大気圧、室温のリアルタイム制御
RTL による保持時間補正機能

GC インテリジェンス機能

7 インチタッチパネル
(8890 GC と同じ)
ブラウザインターフェース、
自己診断機能

省エネルギー

100 V 15 A 電源を使用し、従来型の
GC から昇温時消費電力を 30 % 削減



容易なメンテナンス

6850 GC と同じ上部
開放型オープン
工具不要のライナー交換

省スペース

8890 GC の半分のサイズで
同等の性能

“Beyond All Limits”

Agilent 7010D トリプル四重極 GC/MS



超高感度仕様の最新モデル

- 7010 シリーズトリプル四重極 GC/MS の最新モデルが登場

HES2.0 イオン源テクノロジー

- 更に進化したイオン源により、業界トップクラスの検出限界と
更なる堅牢性を実現

検出器のメンテナンスフィードバックの強化

- ロータリーポンプや検出器、消耗品の状態を可視化し、
装置の寿命を最大化

アジレント・テクノロジー株式会社
DE-003976
〒192-8510 東京都八王子市高倉町 9-1
フリーダイヤル 0120-477-111
www.agilent.com/chem/jp

 **Agilent**
Trusted Answers

アジレント・テクノロジー 2024-2025カラム・消耗品年度末キャンペーン（第二弾） 対象製品一覧

バイアルとバイアルアクセサリ 20%OFF 2024年12月5日～2025年3月28日まで（第一弾から継続）			
部品番号	品名	通常定価	キャンペーン価格
392611535	Vials,PTFE/sil Inrs,2mL,12mmx32mm,100/p	16,000	12,800
5022-6531	Test tubes, 12 x 100 mm - 8 mL, 250/pk	5,600	4,480
5022-6532	Test tubes, 16 x 100 mm - 13 mL, 250/pk	7,600	6,080
5022-6533	Test tubes, 16 x 48 mm, 100/pk	3,000	2,400
5022-6534	Test tubes, 12 x 48 mm, 100/pk	3,100	2,480
5040-4649	Scrw Cap,PTFE/silicone pre-slit bond 500	27,000	21,600
5040-4667	Ergonomic Manual Crimper for 11mm caps	34,000	27,200
5040-4668	Ergonomic Manual DeCapper for 11mm caps	41,000	32,800
5040-4669	Ergonomic Manual Crimper for 20mm caps	34,000	27,200
5040-4671	Ergonomic Manual DeCapper for 20mm caps	41,000	32,800
5040-4681	Purple screw caps PTFE/Silicone septa	3,100	2,480
5040-4682	multiplk screw caps 5 colors 250/cs	8,400	6,720
5040-4683	Light blue screw cap PTFE/Silicone septa	3,500	2,800
5042-1389	Mat 96, Rd, pre-slitted, silicone 50/pk	64,000	51,200
5042-6458	Test tubes, 30 x 100 mm - 58 mL, 100/pk	10,000	8,000
5042-6459	Test tubes, 25 x 100 mm - 35 mL, 100/pk	8,800	7,040
5042-6470	Round bottom glass vial, 30x48mm, 100/PK	13,000	10,400
5042-6491	Snap caps, polyurethane 500/pk	8,900	7,120
5042-8502	96 Well Plates, 150uL, conical, 25/pk	49,000	39,200
5043-9300	WP 96/2.2ml, Sq, U, 41mm, PP, 30/pk	32,000	25,600
5043-9302	WP 96/2.0ml, Rd, U, 45mm, PP, 30/pk	42,000	33,600
5043-9305	WP 96/1.0ml, Rd, U, 32mm, PP, 50/pk	93,000	74,400
5043-9308	WP 96/1.2ml, Rd, U, 27mm, PP, 25/pk	24,000	19,200
5043-9309	WP 96/1.2ml, Rd, U, 27mm, PP, 50/pk	45,000	36,000
5043-9310	WP 96/0.5ml, Rd, U, 14mm, PP, 30/pk	15,000	12,000
5043-9311	WP 96/0.5ml, Rd, U, 14mm, PP, 120/pk	50,000	40,000
5043-9312	WP 96/0.33ml, Rd, V, 14mm, PP, 25/pk	11,000	8,800
5043-9313	WP 96/0.33ml, Rd, V, 14mm, PP, 50/pk	21,000	16,800
5043-9314	WP 96/0.33ml, Rd, V, 14mm, PP, 100/pk	39,000	31,200
5043-9315	WP 384/0.19ml, Sq, V, 22mm, PP, 25/pk	35,000	28,000
5043-9317	Mat 96, Rd, pre-slitted, silicone 50/pk	61,000	48,800
5043-9318	Mat 96, Rd, pre-slitted, silicone 100/pk	117,000	93,600
5043-9319	Mat 96, Sq, pre-slitted, silicone 50/pk	61,000	48,800
5043-9320	Mat 384, Sq, pre-slitted, silicone 50/pk	69,000	55,200
5061-3370	11mm Al crimp cap PTFE/Rubber sept 500PK	12,000	9,600
5065-4402	96 Well plates with glass inserts, caps	18,000	14,400
5067-0205	Scrw Vials/Cap,Silicon Sep Slit/Bond 500	39,000	31,200
5067-0212	Flat bottom glass insert 400ul, 50,000	835,000	668,000
5067-0226	Vial,HS,crimp,FB,20ml,ambr,cert,100PK	8,700	6,960
5067-0227	Vial,HS,crimp,FB,10ml,ambr,cert,100PK	7,300	5,840
5067-0234	20mm PTFE/White silicone septa, 10,000	733,000	586,400
5067-0235	Vial,HS,crimp,RB,20ml,clr,cert,10000CS	568,000	454,400
5067-0236	Crimp cap,20 mm, PTFE/Silicone, 10,000	873,000	698,400
5067-0243	Rack for 50x 12mm 2mL vials,1 each	2,700	2,160
5067-0246	Vial,screw,4ml,clr,WrtOn,100PK	4,000	3,200
5067-0247	Vial,screw,4ml,ambr,WrtOn,100PK	4,100	3,280
5150-1101	PFAS Kit, EPA 537, LC/MS	399,000	319,200
5150-1102	PFAS Kit, EPA 533, LC/MS	381,000	304,800
5150-1103	PFAS Kit, EPA 1633, LC/MS	431,000	344,800
5150-1104	PFAS Kit, EPA 8236, ASTM 7979, DW, LC/MS	207,000	165,600
5150-1105	PFAS Kit, EPA 8327, ASTM 7979, WW, LC/MS	211,000	168,800
5150-1106	PFAS Kit, EU/UK DW, Direct Inject, LC/MS	181,000	144,800

5150-1107	PFAS Kit, EU/UK DW, Offline SPE, LC/MS	340,000	272,000
5150-1108	PFAS Kit, EU/UK DW, Online SPE, LC/MS	274,000	219,200
5180-0841	Vial,HTS-HTC,crimp,RB,0.3ml,clr,500PK	28,000	22,400
5180-0842	8mm Crimp Cap PTFE/Silicone sept 500/PK	21,000	16,800
5180-0844	Vial,HTS-HTC,crimp,TB,0.1ml,clr,500PK	23,000	18,400
5181-1210	11mm slvr al crmp cap redPTFE spta 100pk	2,900	2,320
5181-1211	11mm crimp cap, PTFE/S/PTFE septa 100/PK	3,900	3,120
5181-1212	Crimp caps 11mm/black Viton septa 100/PK	9,600	7,680
5181-1215	Blue crmp cap 11mm, FEP/Rub septa 100/PK	3,400	2,720
5181-1216	Green crimp cap 11mm, FEP/R septa 100/PK	3,200	2,560
5181-1217	Red crimp cap 11mm PTFE/rub septa 100pk	3,400	2,720
5181-1270	250 ul Inserts with Polymer Feet,100/pk	16,000	12,800
5181-1507	Snap caps, polyethylene olefin, 100/PK	2,300	1,840
5181-1512	Snap caps, polyurethane 100/PK	2,400	1,920
5181-1513	Snap caps, polyethylene olefin, 500/PK	9,800	7,840
5181-3375	Vial,crimp,2ml,clr,cert,100PK	2,600	2,080
5181-3376	Vial,crimp,2ml,ambr,WrtOn,cert,100PK	3,000	2,400
5181-3376-ID	Vial,crimp,2ml,ambr,WrtOn,IDcert,100PK	13,000	10,400
5181-3377	400ul flat bottom glass insert, 500/pk	11,000	8,800
5181-3400	2ml Crimp vial, cap, Septa PTFE/R 500/PK	20,000	16,000
5181-8801	2ml vial amber and 11mm cap kit 500/bx	24,000	19,200
5181-8827	Decapper, 8mm vial caps	52,000	41,600
5181-8872	250ul glass inserts, deactivated 100/PK	20,000	16,000
5182-0540	Clear PE Snap Cap w/ PTFE Septa 100/pk	3,000	2,400
5182-0541	Cap, snap, blue, PTFE/sil septa, 100/pk	5,600	4,480
5182-0542	Snap cap 11mm 100/PK	1,700	1,360
5182-0543	Vial,crimp,2ml,clr,WrtOn,cert,100PK	3,000	2,400
5182-0543-ID	Vial,crimp,2ml,clr,WrtOn,IDcert,100PK	12,000	9,600
5182-0544	Vial,snap,2ml,clear,100PK	3,000	2,400
5182-0545	Vial,snap,2ml,ambr,WrtOn,100PK	3,200	2,560
5182-0546	Vial,snap,2ml,clr,WrtOn,100PK	3,200	2,560
5182-0547	2ml vial crimp/snap with snapcaps 500pk	27,000	21,600
5182-0548	Amber vial snap cap w PTFE/rubber 500/pk	32,000	25,600
5182-0549	250ul insert, polypropylene 100/PK	4,000	3,200
5182-0550	Snap cap with red silicone septa 100/PK	3,200	2,560
5182-0551	4ml wash/waste vial 25/PK	5,000	4,000
5182-0552	Crimp cap 11mm, Septa PTFE/S 100/PK	3,500	2,800
5182-0553	Screw cap and clear vial kit 100/PK	8,400	6,720
5182-0554	AsmKit AmbWrtVial GrCap PTFE/redSi 100pk	6,800	5,440
5182-0555	Screw caps, blue, and vial kit 100/PK	11,000	8,800
5182-0556	AsmKit AmbWrtVial Grn PTFE/Si/PTFE 100pk	10,000	8,000
5182-0557	Screw caps, and clear vial kit 100/PK	8,500	6,800
5182-0558	AsmKit AmbWrt Vial GrnCap PTFE/Si 100/pk	9,100	7,280
5182-0564	Clr cap w/PTFE/red si rubber septa,500pk	16,000	12,800
5182-0566	Snap caps 100/PK	6,700	5,360
5182-0567	Vial,crimp/snap,1mL,PP,100PK	3,300	2,640
5182-0575	Vial storage container	1,600	1,280
5182-0714	Vial,screw,2ml,clr,cert,100PK	3,300	2,640
5182-0715	Vial,screw,2ml,clr,WrtOn,cert,100PK	3,500	2,800
5182-0715-ID	Vial,screw,2ml,clr,WrtOn,IDcert,100PK	12,000	9,600
5182-0716	Vial,screw,2ml,ambr,WrtOn,cert,100PK	3,700	2,960
5182-0716-ID	Vial,screw,2ml,ambr,WrtOn,IDcert,100PK	13,000	10,400
5182-0717	Blue screw caps 100/PK	3,500	2,800
5182-0718	Screw cap green 100/PK	3,500	2,800
5182-0719	Screw cap red 100/PK	3,500	2,800
5182-0720	Caps, screw type, blue 100/PK	5,000	4,000
5182-0721	Screw caps, green 100/PK	5,000	4,000

5182-0722	Screw caps, red, 100/PK	5,000	4,000
5182-0723	Caps, screw type, color blue, 100/PK	6,100	4,880
5182-0724	Caps, screw type, green, 100/PK	6,100	4,880
5182-0725	Screw caps, color: red, 100/PK	6,100	4,880
5182-0726	Red screw caps 100/PK	1,700	1,360
5182-0727	Green color screw caps 100/PK	1,700	1,360
5182-0728	Blue color screw caps 100/PK	1,700	1,360
5182-0729	Screw cap septa, 100/pk	4,300	3,440
5182-0730	Septa, PTFE/white silicone, 8.7mm 100/pk	3,200	2,560
5182-0731	Septa, PTFE/red silicone, 8.7mm 100/pk	2,300	1,840
5182-0732	Screw vials,bl caps,PTFE/red spta,500pk	35,000	28,000
5182-0733	Screw top 2ml vials, green caps, 500/pk	34,000	27,200
5182-0734	Screw Cap Vial And Septa Kit 500EA	37,000	29,600
5182-0735	Screw Cap Vial + Septa Kit, Amber 500EA	39,000	31,200
5182-0736	Screw Cap Vial, Cap + Septa Kit 500EA	46,000	36,800
5182-0737	Screw Cap Vial, Cap/Septa Kit 500EA	45,000	36,000
5182-0837	Vial,HS,crimp,FB,20ml,clr,cert,100PK	6,500	5,200
5182-0838	Vial,HS,crimp,FB,10ml,clr,cert,100PK	5,200	4,160
5182-0839	Headspace vials,relse cap,sept 20ml 100PK	18,000	14,400
5182-0840	20ml Headspace supply kit high temp100PK	15,000	12,000
5182-0864	Screw cap vials, pre-assembled, 100/PK	8,600	6,880
5182-0865	Screw cap vials, write on spot, 100/PK	9,800	7,840
5182-0866	Screw top vial, write-on-spot 100pk	11,000	8,800
5182-0867	Screw top 2ml vials, blue caps, 500/pk	33,000	26,400
5182-0868	Screwcap vials, with septa 500kt	37,000	29,600
5182-0869	Screwcap vial with septa 500pc kit	49,000	39,200
5182-0871	PTFE disc in aluminum crimp seal,100pk	1,700	1,360
5182-3454	Vial,HiRec,crimp,1.5ml,clr,100PK	21,000	16,800
5182-3457	Snap caps,green,red rubber/PTFE 100/PK	3,300	2,640
5182-3458	Snap cap, blue,red rubber/PTFE 100/PK	3,500	2,800
5182-3459	Snap cap, red, red rubber/PTFE 100/PK	3,400	2,720
5182-9697	Vial,crimp/snap,2ml,clr,CE,100PK	2,600	2,080
5183-2030	Vial,HiRec,screw,1.5ml,clr,100PK	23,000	18,400
5183-2067	Vial,screw,2ml,clr,cert,1000CS	29,000	23,200
5183-2068	Vial,screw,2ml,clr,WrtOn,cert,1000CS	31,000	24,800
5183-2069	Vial,screw,2ml,ambr,WrtOn,cert,1000CS	33,000	26,400
5183-2070	Vial,screw,2ml,clr,SLN,cert,100PK	6,000	4,800
5183-2071	Vial,screw,2ml,clr,WrtOn,SLN,cert,100PK	6,300	5,040
5183-2072	Vial,screw,2ml,ambr,WrtOn,SLN,cert,100PK	6,500	5,200
5183-2073	Vial,HiRec,screw,1.5ml,ambr,100PK	23,000	18,400
5183-2074	Blue pre-slit PTFE/Si septa, 100PK	4,700	3,760
5183-2075	Blue plypro solid scrw tp,PTFE linr100PK	4,500	3,600
5183-2076	Blue scrw tp,pre-slit PTFE/Si spta,100PK	5,900	4,720
5183-2077	Gren scrw tp,pre-slit PTFE/Si spta,100PK	5,900	4,720
5183-2078	Red scrw tp,pre-slit PTFE/Si spta, 100PK	5,900	4,720
5183-2079	Clr vial,scrw cp,slit PTFE/Si spta,500PK	43,000	34,400
5183-2080	Clr Vial,scrw cp,w/spt,slit PTFESi 500PK	46,000	36,800
5183-2081	Ambr scrw vial w/spot,slit PTFE/Si,500PK	43,000	34,400
5183-2082	Clr scrw vial,slit PTFE/Si Septa, 100/PK	10,000	8,000
5183-2083	Clr scrw vial w/spot,slit PTFE/Si,100PK	11,000	8,800
5183-2085	250ul pulled pntconical glas insrt,100pk	6,600	5,280
5183-2086	400ul Silanized flat btm insrts,500/PK	25,000	20,000
5183-2088	150ul glass inserts, polymer feet, 100PK	8,300	6,640
5183-2089	150uL Vial insert, pulled pt glass,100pk	4,900	3,920
5183-2090	200ul flat bottm f/8-425 scrw vial 100PK	3,500	2,800
5183-4301	13-425 White Closed Top Cap, PTFE/Si	3,900	3,120
5183-4302	15-425 White Closed Top Cap, PTFE/Si	5,100	4,080

5183-4303	20-400 White Closed Top Cap, PTFE/Si	7,500	6,000
5183-4304	24-414 White Closed Top Cap, PTFE/Si	6,900	5,520
5183-4305	13-425 White Open Top Cap, PTFE/Si	3,900	3,120
5183-4306	15-425 White Open Top Cap, PTFE/Si	5,100	4,080
5183-4307	20-400 White Open Top Cap, PTFE/Si	7,500	6,000
5183-4308	24-414 White Open Top Cap, PTFE/Si	5,600	4,480
5183-4311	Strg Vial Kit,4mL,15x45 Clear,13-425 Cap	7,000	5,600
5183-4312	Strg Vial Kit,12mL,19x65 Clear,15-425Cap	8,400	6,720
5183-4313	Strg Vial Kit,22mL,23x85 Clear,20-400Cap	13,000	10,400
5183-4314	Strg Vial Kit,40mL,28x95 Clear,24-414Cap	13,000	10,400
5183-4321	Strg Vial Kit,4mL,15x45 Amber,13-425 Cap	8,100	6,480
5183-4322	Strg Vial Kit,12mL,19x65 Amber,15-425Cap	9,300	7,440
5183-4323	Strg Vial Kit,22mL,23x85 Amber,20-400Cap	14,000	11,200
5183-4324	Strg Vial Kit,40mL,28x95 Amber,24-414Cap	14,000	11,200
5183-4331	Strg Vial Kit,4mL,15x45Clear,13-425Cap	8,600	6,880
5183-4332	Strg Vial Kit,12mL,19x65Clear,15-425Cap	9,900	7,920
5183-4333	Strg Vial Kit,22mL,23x85Clear,20-400Cap	15,000	12,000
5183-4334	Strg Vial Kit,40mL,28x95Clear,24-414	16,000	12,800
5183-4428	Vial,screw 8-425,2ml,clr,100PK	3,100	2,480
5183-4429	Vial,screw 8-425,2ml,ambr,100PK	3,400	2,720
5183-4432	Vial,screw 8-425,2ml,clr,SLN,100PK	7,000	5,600
5183-4433	Vial,screw 8-425,2ml,ambr,SLN,100PK	7,100	5,680
5183-4436	Red PTFE/Si/Red PTFE septa, 8mm, 100PK	3,900	3,120
5183-4437	Red PTFE/Si septa, 8mm, 100/PK	2,800	2,240
5183-4438	Blk cap,for 8-425 opn scrw tp vial,100PK	1,000	800
5183-4442	Blk cp,f/8-425 scrw vial, PTFE/Si, 100PK	5,000	4,000
5183-4448	Vial,screw,4ml,clr,100PK	3,000	2,400
5183-4450	Vial,screw,4ml,ambr,100PK	3,500	2,800
5183-4459	Virgin PTFE septa, 0.010, 12mm, 1000PK	6,300	5,040
5183-4460	Red PTFE/wht Si septa,0.060in,12mm,100PK	3,200	2,560
5183-4461	Black cap,13-425 open screw top, 100PK	900	720
5183-4464	Blk cap, PTFE/Si sept,.060in,instd,100Pk	6,400	5,120
5183-4474	Vial,HS,crimp,RB,20ml,clr,cert,100PK	6,200	4,960
5183-4475	Vial,HS,crimp,RB,10ml,clr,cert,100PK	6,400	5,120
5183-4476	Gry butyl hdspc strpr,20mm,-40/120C,100PK	2,100	1,680
5183-4477	Hdspc Al crmp cap,PTFE/Si sep,20mm,100PK	10,000	8,000
5183-4478	Hdspc Al sfty crmp cap,PTFESi,20mm,100PK	11,000	8,800
5183-4479	Hdspc Al crmp cap, PTFE/btyl, 20mm,100PK	11,000	8,800
5183-4480	Hdspc Al sfty crmpcp,PTFEbtyl,20mm,100PK	12,000	9,600
5183-4491	Vial,crimp,2ml,clr,cert,1000pk	23,000	18,400
5183-4492	Vial,crimp,2ml,clr,WrtOn,cert,1000CS	27,000	21,600
5183-4493	Vial,crimp,2ml,ambr,WrtOn,cert,1000CS	27,000	21,600
5183-4494	Vial,crimp,2ml,clr,SLN,cert,100PK	5,600	4,480
5183-4495	Vial,crimp,2ml,clr,WrtOn,SLN,cert,100PK	5,800	4,640
5183-4496	Vial,crimp,2ml,ambr,WrtOn,SLN,cert,100PK	6,600	5,280
5183-4497	Vial,HiRec,crimp,1.5ml,clr,SLN,100PK	25,000	20,000
5183-4498	Slvr crimp cap,PTFE/rubber, 11mm, 1000PK	25,000	20,000
5183-4499	Slvr crmp cap,PTFE/si/PTFE,11mm, 1000PK	34,000	27,200
5183-4500	Sliver Crimp Cap, PTFE/Si, 11mm,1000PK	31,000	24,800
5183-4504	Vial,snap,2ml,clear,1000PK	25,000	20,000
5183-4505	Vial,snap,2ml,clr,WrtOn,1000PK	26,000	20,800
5183-4506	Vial,snap,2ml,ambr,WrtOn,1000PK	31,000	24,800
5183-4507	Vial,snap,2ml,clr,SLN,100PK	6,300	5,040
5183-4508	Vial,snap,2ml,clr,WrtOn,SLN,100PK	6,500	5,200
5183-4509	Vial,snap,2ml,ambr,WrtOn,SLN,100PK	6,800	5,440
5183-4510	Vial,HiRec,snap,1.5ml,clr,100PK	22,000	17,600
5183-4511	Clear snap cap, slit PTFE/Si septa 100PK	6,200	4,960

5183-4619	Vial,crimp/snap,2ml,ambr,CE,100PK	3,000	2,400
5183-4741	Vial Kit 40ml Preclean 72 vials+cap+sptm	34,000	27,200
5183-4742	Vial Kt Amb 40ml Preclnd 72 Vls+Cap+Sptm	37,000	29,600
5183-4743	Septa for 40ml Vials Precleaned 72/PK	16,000	12,800
5183-4744	Screw Caps for 40ml vials 24/PK	3,600	2,880
5184-3550	Vial,MicroV,screw,1.5ml,clr,100PK	13,000	10,400
5184-3551	Vial,MicroV,crimp,1.5ml,clr,100PK	13,000	10,400
5184-3552	Vial,MicroV,snap,1.5ml,clr,100PK	13,000	10,400
5184-3554	Vial,MicroV,screw,1.5ml,ambr,100PK	14,000	11,200
5184-3555	Vial,MicroV,crimp,1.5ml,ambr,100PK	14,000	11,200
5184-3556	Vial,MicroV,snap,1.5ml,ambr,100PK	14,000	11,200
5185-5820	Blue screw caps,PTFE/red sil septa,500pk	16,000	12,800
5185-5823	Blue screw cap,PTFE/sil bond septa,100pk	3,900	3,120
5185-5824	Cap PTFE/sil pre-slit bond septa 100/pk	5,600	4,480
5185-5829	Green screw cap,PTFE/red sil septa,500pk	16,000	12,800
5185-5838	Black screw cap, PTFE/sil septa,100pk	3,200	2,560
5185-5861	Green screw cap,PTFE/sil/septa,500pk	25,000	20,000
5185-5862	Blue screw cap,PTFE sil/PTFE spta,500pk	25,000	20,000
5185-5863	Blue screw cap,PTFE/sil septa,500pk	20,000	16,000
5185-5864	Green screw cap,PTFE/sil septa,500pk	19,000	15,200
5185-5865	Blue cap PTFE/sil pre-slit septa 500/pk	25,000	20,000
5185-5957	Vial,HS,crimp,FB,20ml,clr,cert,10000CS	624,000	499,200
5188-2753	Vial,HS,screw,20ml,clr,100PK	11,000	8,800
5188-2758	PTFE/silicone septa 16mm pre-silt 100/pk	6,400	5,120
5188-2759	Hdsp cap 18mm magnetic PTFE/sil 100pk	19,000	15,200
5188-2788	Vial,crimp/snap,250uL,PP,cert,100PK	5,000	4,000
5188-5321	Glass Inserts, 350uL, 1000/pk	35,000	28,000
5188-5322	Cap for 350ul glassinsert 1000/pk	98,000	78,400
5188-5369	Vial,screw,5ml,HighRec,clr,cert,30PK	17,000	13,600
5188-5386	Crimp cap,11mm Magnetic CTC,100 pk	9,500	7,600
5188-5390	Vial,screw,250uL,w/insrt,PP,100PK	31,000	24,800
5188-5392	Vial,HS,screw,10ml,clr,100PK	9,400	7,520
5188-6535	Vial,screw,2ml,ambr,cert,100PK	3,300	2,640
5188-6536	Vial,screw,2ml,ambr,cert,1000CS	30,000	24,000
5188-6537	Vial,HS,screw,20ml,ambr,100PK	15,000	12,000
5188-6538	Vial,HS,screw,10ml,ambr,100PK	14,000	11,200
5188-6572	Vial,crimp,300ul,w/insrt,ambr,100PK	16,000	12,800
5188-6591	Vial,screw,300ul,w/insrt,clr,100PK	15,000	12,000
5188-6592	Vial,screw,300ul,w/insrt,ambr,100PK	16,000	12,800
5188-6593	Vial,snap,300ul,w/insrt,clr,100PK	15,000	12,000
5188-6594	Vial,snap,300ul,w/insrt,ambr,100PK	15,000	12,000
5190-1454	DC Power Supply Crimper and Decapper	12,000	9,600
5190-1599	Blue Screw Cap,PTFE/Red Si Septa 1000	31,000	24,800
5190-2237	Insert and Cap Refill Kit for 96WP	144,000	115,200
5190-2238	Vial,HS,crimp,RB,10ml,ambr,cert,100PK	6,700	5,360
5190-2239	Vial,HS,crimp,RB,20ml,ambr,cert,100PK	6,700	5,360
5190-2240	Snap Vial and Cap Convenience Pk 500	33,000	26,400
5190-2241	Crimp Vial and Cap Convenience Pk 500	27,000	21,600
5190-2242	Vial,screw,250uL,PP,cert,100PK	5,000	4,000
5190-2243	Vial,screw,250uL,PP,cert,1000PK	43,000	34,400
5190-2257	HS Crimp Cap PTFE/Si Septa, 10000/pk	850,000	680,000
5190-2258	HS Crimp Cap Mlded PTFE/Butyl Spta 10000	978,000	782,400
5190-2278	MS Analyzed Kit Clr Scrw WriteOn PTFE/Si	13,000	10,400
5190-2280	MS Analyzed Kit Amb Scrw WriteOn PTFE/Si	13,000	10,400
5190-2282	MS Analyzed Kit Clr Crmp WriteOn PTFE/Si	13,000	10,400
5190-2283	MS Analyzed Kit Amb WrtOn Crmp PTFE/Si	13,000	10,400
5190-2285	Vial,HS,crimp,FB,10ml,clr,WrtOn,cert,100	6,900	5,520

5190-2286	Vial,HS,crmp,FB,20ml,ambr,WrtOn,cert,100	8,000	6,400
5190-2287	Vial,HS,crmp,FB,10ml,ambr,WrtOn,cert,100	6,900	5,520
5190-2288	Vial,HS,crimp,FB,20ml,clr,WrtOn,cert,100	6,900	5,520
5190-3156	Screw Cap Blue PTFE/Silicone Septa	2,200	1,760
5190-3186	2ml Crmp Cap PTFE/Silicone 10,000/pk	316,000	252,800
5190-3192	Replacement lithium ion batt for crimper	20,000	16,000
5190-3198	22mm Septa epa lowbleed fr Archon 300/pk	59,000	47,200
5190-3976	22mm Septa epa lowbleed fr Archon 60/pk	15,000	12,000
5190-3978	22mm septa for Archon caps ptfe/sil 72pk	18,000	14,400
5190-3986	Hdsp scrw cap hightemp septa 100/pk	19,000	15,200
5190-3987	Hdsp crimp cap high perf septa 100/pk	10,000	8,000
5190-4000	40mL strg vial kit ambr opn cap 100/pk	16,000	12,800
5190-4030	Vial,screw,2ml,clr,LP,100PK	3,500	2,800
5190-4031	Vial,screw,2ml,clr,WrtOn,LP,100PK	3,700	2,960
5190-4032	Vial,crimp,2ml,clr,LP,100PK	2,800	2,240
5190-4033	Vial,crimp,2ml,clr,WrtOn,LP,100PK	3,300	2,640
5190-4034	Vial,screw,2ml,ambr,WrtOn,LP,100PK	4,000	3,200
5190-4035	Vial,crimp,2ml,ambr,WrtOn,LP,100PK	3,300	2,640
5190-4036	Vial,crimp,2ml,clr,WrtOn,SN,100PK	3,600	2,880
5190-4037	Vial,screw,2ml,clr,SN,100PK	3,900	3,120
5190-4038	Vial,screw,2ml,ambr,WrtOn,SN,100PK	4,400	3,520
5190-4039	Vial,snap,2ml,clr,WrtOn,SN,100PK	3,800	3,040
5190-4040	Vial,snap,2ml,ambr,WrtOn,SN,100PK	3,400	2,720
5190-4043	Vial,snap,2ml,clr,SN,100PK	3,000	2,400
5190-4044	Vial,screw,2ml,clr,WrtOn,SN,100PK	4,200	3,360
5190-4045	Vial,crimp,2ml,clr,SN,100PK	3,100	2,480
5190-4046	Vial,crimp,2ml,ambr,WrtOn,SN,100PK	3,800	3,040
5190-4049	Blue scrw cap PTFE Red sil septa 5,000pk	127,000	101,600
5190-4050	Blue screw cap PTFE/sil/PTFE 5000 pk	217,000	173,600
5190-4051	Crmp cap 11mm PTFE/S/PTFE septa 5,000pk	139,000	111,200
5190-4052	Crmp cap 11mm PTFE/S septa 5,000pk	124,000	99,200
5190-4053	Crmp cap 11mm PTFE/RdRbbr septa 5,000pk	96,000	76,800
5190-4062	11mm Crimper Jaw Set for HP Elec Crimper	60,000	48,000
5190-4063	11mm Decapper Jaw Set	55,000	44,000
5190-4064	20mm Crimper Jaw Set	55,000	44,000
5190-4065	20mm Decapper Jaw Set	52,000	41,600
5190-4066	Base for Electronic Crimping Tool	34,000	27,200
5190-4073	250ul insert, polypropylene w/grad 100pk	4,600	3,680
5190-4074	Blue crmp cap,PTFE/si/PTFE, 11mm, 1000PK	36,000	28,800
5190-4075	Red crmp cap, PTFE/si/PTFE, 11mm, 1000PK	36,000	28,800
5190-6096	Green crmp cap,PTFE/si/PTFE,11mm, 1000PK	36,000	28,800
5190-6113	Amber crimp top Vial write-on 10,000pk	258,000	206,400
5190-6114	Amber 2mL Screw Top Vial 10,000pk	282,000	225,600
5190-6115	Amber 2mL Screw Vial w/wrt-on 10,000pk	314,000	251,200
5190-6116	2ml clear wide crimp vial, 10,000pk	221,000	176,800
5190-6117	2ml wide crimp vial write-on 10,000pk	258,000	206,400
5190-6118	Screw cap vials, clear 10,000pk	277,000	221,600
5190-6119	2ml Screw cap vial clear wrton 10,000pk	295,000	236,000
5190-6128	SN-2mL Clr crimp/snap vial wrt on 1000pk	29,000	23,200
5190-6129	SN-2mL clear wide crimp vial, 1000PK	28,000	22,400
5190-6131	SN-2mL Clear wide screw top vial 1000pk	35,000	28,000
5190-6132	SN-2mL Ambr wide screw vial wrton 1000pk	40,000	32,000
5190-6133	SN-2mL Clear wide scrw vial wrton 1000pk	38,000	30,400
5190-6134	SN-2mL Amber snap write-on 1000pk	30,000	24,000
5190-6151	SN 2mL crimp cap rubber septa 100pk	2,400	1,920
5190-6169	Crimp caps thin membrane septa 25/PK	8,200	6,560
5190-6172	Red Screw Caps for 40mL Vials 100/pk	3,600	2,880

5190-6176	SN Blue screw caps 100/PK	3,500	2,800
5190-6182	MS Analyzed Kit Amb WrtOn Crmp 1,000pk	115,000	92,000
5190-6184	MS Analyzed Kit Clr Scrw WriteOn 1,000pk	115,000	92,000
5190-6186	MS Analyzed Kit Amb Scrw WriteOn 1,000pk	117,000	93,600
5190-7021	BND Blue Scr Cap PTFE/Wht Si septa 100pk	4,700	3,760
5190-7023	BND Blu Scr Cap Pslit PTFEWht Si spta100	5,200	4,160
5190-7024	BND Blue Scr Cap PTFE/red Si septa 100pk	4,100	3,280
5190-7025	BND Grn Scr Cap PTFE/red Si septa 100pk	4,100	3,280
5190-7026	BND Grn Scr Cap PTFE/Wht Si septa 100pk	4,700	3,760
5190-7028	BND Grn Scr Cap Slit PTFE/Si septa 100pk	5,200	4,160
5190-7029	BND Red Scr Cap PTFE/Red Si septa 100pk	4,100	3,280
5190-7030	BND Red Scr Cap PTFE/Wht Si septa 100pk	4,700	3,760
5190-7032	BND Red Scr Cap PreSlit PTFE/Si septa100	5,200	4,160
5190-9045	Crmp cap al blu redsilptfe spta 100pk	2,000	1,600
5190-9062	Vial, clr scrw 2ml 100cs 100pk	115,000	92,000
5190-9062-X	Vial, clr scrw 2ml 100cs 100pk	115,000	92,000
5190-9063	Vial, ambr scrw wrtn 2ml 100cs 100pk	147,000	117,600
5190-9064	Vial, clr crmp 2ml 100cs 100pk	115,000	92,000
5190-9064-X	Vial, clr crimp 2ml 100cs 100pk	115,000	92,000
5190-9065	Vial, ambr crmp wrtn 2ml 100cs 100pk	147,000	117,600
5190-9066	Cap, 11mm crimp, PTFE/Red sil, 1000PK	9,700	7,760
5190-9067	Cap,9mm blu scrw bnd,prslt PTFE/S,1000PK	10,000	8,000
5190-9068	Cap, 9mm blue scrw bnded, PTFE/S, 1000PK	9,700	7,760
5190-9090	Test tubes, 30 x 150 mm - 78 mL, 100/pk	13,000	10,400
5190-9091	Test tubes, 25 x 150 mm - 55 mL, 100/pk	7,600	6,080
5190-9092	Test tubes, 16 x 150 mm - 21 mL, 250/pk	8,900	7,120
5190-9093	Test tubes, 12 x 150 mm - 11 mL, 250/pk	8,500	6,800
5190-9100	Vial, clr scrw wrtn 2ml 100cs 100pk	165,000	132,000
5190-9100-X	Vial, clr scrw wrtn 2ml 100cs 100pk	165,000	132,000
5190-9558	Vial, clr crmp wrtn 2ml 100cs 100pk	163,000	130,400
5190-9558-X	Vial, clr crimp wrtn 2ml 100cs 100pk	163,000	130,400
5190-9589	Vial,A-Line,Screw,Wrt-on,Clr,2mL,100/pk	4,600	3,680
5190-9590	Vial,A-Line,Screw,Wrt-on,Ambr,2mL,100/pk	5,200	4,160
5190-9591	Vial,A-Line,Crimp,Wrt-on,Clr,2mL,100/pk	4,400	3,520
5190-9592	Vial,A-Line,Crimp,Wrt-on,Ambr,2mL,100pk	4,900	3,920
5190-9598	Vial, crimp top, HS, 10 ml, clear 1000PK	38,000	30,400
5190-9599	Vial, crimp top, HS, 20 ml, clear 1000pk	48,000	38,400
5190-9600	Vial, crimp top, HS, 10 ml, amber 1000pk	52,000	41,600
5190-9601	Vial, crimp top, HS, 20 ml, amber 1000pk	63,000	50,400
5190-9604	Cap,24-414,white,open,PTFE/sil 1000pk	33,000	26,400
5190-9605	Cap, 24-414,white,closed,PTFE/sil 1000pk	32,000	25,600
5190-9606	Vial, screw, 40ml, 28 x 95, clear,1000pk	32,000	25,600
5190-9607	Vial, screw, 40ml, 28 x 95, amber,1000pk	32,000	25,600
5190-9655	Cap,crimp,SlvrAl,HS,20mm,PTFE/sil,1000pk	72,000	57,600
5191-5613	A-Line E-decapper,LithBat,20mm caps	128,000	102,400
5191-5614	A-Line E-decapper,LithBat,11mm caps	128,000	102,400
5191-5615	A-Line E-crimper,LithBat,20mm caps	128,000	102,400
5191-5616	A-Line E-crimper,LithBat,11mm caps	128,000	102,400
5191-5617	A-Line HP E-crimper,pwr sup,nojaws	232,000	185,600
5191-5618	Cap, 9mm blue scrw bnded, PTFE/wS,1000pk	9,500	7,600
5191-5620	Cap,24-414,red,opentop,PTFE/sil,1000pk	31,000	24,800
5191-5621	Cap,24-414,green,opentop,PTFE/sil,1000pk	32,000	25,600
5191-5624	A-Line HP E-crimper, with power,20mm jaw	342,000	273,600
5191-5630	HS cap,crmp,mgn,SPME,P/Si,mCr,20mm,100PK	11,000	8,800
5191-5632	Septa,HS,20mm,gry ml PTFE/Bl butyl,100pk	11,000	8,800
5191-5634	Vial,crimp,HS,20ml,RB,clr,1000pk	50,000	40,000
5191-5636	Cap,Crmp,HS,20mm,BiM,PTFE/sil,1000pk	76,000	60,800

5191-6637	Cap,Crmp,HS,20mm,BiM,PTFE/butyl,100pk	8,200	6,560
5191-6638	Cap,Crmp,HS,20mm,BiM,PTFEbutyl,1000pk	82,000	65,600
5191-8100	Cap,24-414WhiteOpenTop,PTFE/Si/T,100pk	3,400	2,720
5191-8111	Cap, 11mm clear Snap PTFE/Sil, 1000pk	11,000	8,800
5191-8112	Vial,snap,2ml,clr,WrtOn,100PK	1,400	1,120
5191-8113	Vial,snap,2ml,clr,WrtOn,1000PK	14,000	11,200
5191-8121	Vial, screw,2ml,PP,cert,100PK	2,700	2,160
5191-8122	Vial, crimp/snap,2ml,PP,cert,100PK	2,800	2,240
5191-8123	Vial, screw,2ml,PP,certified,500PK	13,000	10,400
5191-8124	Vial, crimp/snap,2ml,PP,cert,500PK	13,000	10,400
5191-8150	Vial, screw, 2ml ,PP,cert,100PK	6,700	5,360
5191-8151	Cap,9mm,scrw,clr,thinPP/sil septa,100pk	1,800	1,440
5191-8160	Cap,scrw,PolyMg,bnded,PTFE/sil,100pk	6,700	5,360
5191-8161	Cap,scrw,PolyMg,bndd,Psit,PTFE/sil,100pk	7,600	6,080
8010-0010	Vial,screw 8-425,2ml,clr,WrtOn,100PK	2,900	2,320
8010-0012	Vial,screw,2ml,ambr,WrtOn,100PK	3,200	2,560
8010-0026	Vial,snap,2ml,ambr,100PK	3,400	2,720
8010-0051	crmp cap 11m slvr PTFE/Butyl 100pk	5,000	4,000
8010-0058	scrw cap blk 8mm PTFE/sil/PTFE 100pk	4,600	3,680
8010-0063	scrw cap black 8mm PTFE/sil/PTFE 100pk	4,600	3,680
8010-0068	scrw cap blk 8mm PTFE/sil/PTFE 100pk	4,600	3,680
8010-0101	screw cap 16mm PTFE/sil septa 100pk	16,000	12,800
8010-0102	screw cap 16mm preslit PTFE/sil 100pk	18,000	14,400
8010-0139	hdsp scrw cap 18mm mag PTFE/sil 100pk	8,000	6,400
8010-0140	hdsp cap 18mm magnetic PTFE/butl	8,000	6,400
8010-0142	screw cap 8mm slit PTFE/sil 100pk	4,300	3,440
8010-0152	Vial,HS,crimp,22ml,clr,100PK	6,100	4,880
8010-0165	hdsp cap magnetc 20mm slvr 100/pk	6,700	5,360
8010-0179	Vial,HS,crimp,FB,10ml,clr,1000CS	45,000	36,000
8010-0180	Vial,HS,crimp,FB,20ml,clr,1000CS	55,000	44,000
8010-0186	screw cap blu 9mm PTFE/sil 1000/cs	42,000	33,600
8010-0187	scrwcap blu 9mm PTFE/sil/PTFE 1000/cs	42,000	33,600
8010-0188	septa 9mm red PTFE/sil/PTFE 1000/cs	35,000	28,000
8010-0189	snap cap clr 11mm PTFE/redsi 1000/cs	29,000	23,200
8010-0190	snap cap 11mm orgng PTFE/whtsi 1000/cs	48,000	38,400
8010-0191	hdsp cap 20mm slv tanPTFE/sil 1000/cs	75,000	60,000
8010-0192	hdsp septa 20mm tan PTFE/sil 1000/cs	58,000	46,400
8010-0195	2ml crmp vl clr slvcap PTFE/si 100/pk	8,200	6,560
8010-0196	2ml crmp vl amb slvcap PTFE/si 100/pk	8,200	6,560
8010-0198	9mm scrw vl clr blue cap PTFE/si 100/pk	8,000	6,400
8010-0199	9mm scrw vl amb blue cap PTFE/si 100/pk	8,000	6,400
8010-0200	2ml snap vl clr redcap PTFE/Si 100pk	6,600	5,280
8010-0411	2ml snap vl ambr redcap PTFE/Si 100pk	6,800	5,440
8010-0412	10ml hdsp fl clr slcap PTFE/si 100/pk	14,000	11,200
8010-0413	20ml hdsp fl clr slcap PTFE/si 100/pk	15,000	12,000
8010-0414	2mL 8mm scrw vial+cap PTFE/sil 100/pk	7,000	5,600
8010-0415	2ml 8mm amb scrw vl+cp ptf/sil 100/pk	7,100	5,680
8010-0416	5mL storage vial snap cap kit 100/pk	25,000	20,000
8010-0417	20mL scrw hdsp vial+cap pt/sl 100/pk	23,000	18,400
8010-0418	18mm hdsp septa PTFE/silicone 1000/pk	44,000	35,200
8010-0419	Chromatoprobe for Bruker sampler 100pk	14,000	11,200
8010-0420	20mm bimetal crimp cap PTFE/sil 100pk	9,300	7,440
8010-0422	10mL snap vial and cap for 8410 sampler	27,000	21,600
8010-0423	20mm snap cap for 10 and 5mL sampl vials	15,000	12,000
8010-0424	20mm crimp cap,small 5mm opng 100/pk	12,000	9,600
8010-0425	2mL scrw vialkit pre-slt PTFE/sil 100/pk	12,000	9,600
8010-0426	2mL screw vial kit PTFE/butyl 8mm 100/pk	7,900	6,320

8010-0542	vial clr scrw pre-slit PTFE/sil 100pk	8,400	6,720
8010-0543	vial amb scrw pre-slit PTFE/sil 100pk	8,400	6,720
8010-0553	4mL clr scrw 13mm blk PTFE/sil 100pk	10,000	8,000
8010-0554	4mL amb scrw 13mm blk PTFE/sil 100pk	9,300	7,440
8010-0564	Vial septa, 20mm thin, PTFE, 100PK	4,400	3,520
8010-0574	snp shll vial clr 1mL 8mm ppcap 100pk	6,500	5,200
8010-0582	cap crimp 11mm preslit PTFE/sil 100pk	4,400	3,520
8710-1643	Crimper, 8mm	44,000	35,200
9301-0718	20mm silver alum safety crimp cap 100pk	1,900	1,520
9301-0719	20mm Tan PTFE/White silicone septa,100PK	9,300	7,440
9301-0721	20mm silver alum crimp cap,100pk	1,600	1,280
9301-0722	12mm Plastic vial rack, 5/PK	12,000	9,600
9301-0977	Vial,crimp/snap,250uL,w/insrt,PP,100PK	30,000	24,000
9301-0978	Vial,crimp/snap,250uL,PP,cert,1000CS	40,000	32,000
9301-1031	Septa for 4ml vial 144/PK	4,900	3,920
9301-1377	Vial,screw,6ml,clr,100PK	4,600	3,680
9301-1378	Septa for 6ml screw cap vials 100/PK	6,400	5,120
9301-1379	Screw caps for 6ml vials 100/PK	3,400	2,720
9301-1387	100ul -Vial Inserts 500/PK	20,000	16,000
9301-1388	Vial,crimp,300ul,w/insrt,clr,100PK	15,000	12,000
9301-1419	Vial,Crimp,FB,6ml,clr,100PK	5,100	4,080
9301-1425	20mm Crimp caps with septa, 100/PK	7,500	6,000
CP10048	Cap,aluminum for 1 mL vials,11mm,1000/pk	27,000	21,600
CP959268	11mm AC,ch;Sil w/PTFE r,45 A,1.3,100pk	4,800	3,840
G6500-88027	Caps and Seals for Wash Sta Vials (10)	7,900	6,320

LCサプライ 20%OFF 2025年2月5日～3月28日まで			
部品番号	品名	通常定価	キャンペーン価格
0100-0900	Union, 1/16in. SS zero dead volume	15,000	12,000
0100-1259	Plastic Fitting	400	320
0100-1516	Fitting-Fingertight PEEK for 1/16in	3,500	2,800
0100-1619	1/16in Union, SST,-.010in Thru Hole ZDV	22,000	17,600
0100-1847	Fitting-Adapter female-to-male 1000PSI	2,600	2,080
0100-2298	Adapter, PEEK int. 1/4-28 to ext. 10-32	4,100	3,280
01080-83202	Blanking Nut 1/16inch stainless steel	7,200	5,760
0890-1761	Tube PEEK 0.5x1524mm, 1.6mm	3,300	2,640
0890-1762	Tube PEEK 0.25x1524mm, 1.6mm	3,300	2,640
0890-1763	Tube PEEK 0.18x1524mm, 1.6mm	3,900	3,120
0890-1915	Tube PEEK 0.13x1524mm, 1.6mm	4,800	3,840
0890-1921	Tube Peek .03in id	7,600	6,080
3150-0958	Solvent inlet filter,PTFE, 10um pore	5,800	4,640
5004-0011	Capillary ST 0,12x160 SL/SL	6,700	5,360
5004-0016	Capillary MP35N 0.12x120 SX-SX NS-NS	19,000	15,200
5004-0017	Capillary MP35N 0.12x200 SX-SI	19,000	15,200
5004-0018	Capillary MP35N 0.12x90 SI-SX NS-NS	19,000	15,200
5004-0019	Capillary MP35N 0.17x700 SX-SI	26,000	20,800
5004-0020	Capillary MP35N 0.12x170 M/M Transfer	19,000	15,200
5004-0021	Capillary MP35N 0.12x85 M/M	18,000	14,400
5004-0022	Capillary MP35N 0.12x170 M/M	19,000	15,200
5004-0023	Capillary MP35N 0.12x340 M/M	28,000	22,400
5004-0024	Capillary MP35N 0.12x680 M/M	40,000	32,000
5004-0025	Capillary MP35N 0.35x104 M/M 10ul	18,000	14,400
5004-0026	Capillary MP35N 0.35x208 M/M 20ul	19,000	15,200
5004-0027	Capillary MP35N 0.35x420 M/M 40ul	28,000	22,400
5004-0028	Capillary MP35N 0.35x831 M/M 80ul	42,000	33,600
5004-0029	Capillary MP35N 0.35x1247 M/M 120ul	56,000	44,800

5004-0030	Capillary MP35N 0.35x1870 M/M 180ul	80,000	64,000
5004-0031	Capillary MP35N 0.12x600	28,000	22,400
5004-0036	Capillary ST 0.35x1870 SL/SL 180ul	17,000	13,600
5004-0039	Capillary MP35N 0.12x50 SX	26,000	20,800
5004-0040	Capillary MP35N 0.17x90 SI/SX	21,000	16,800
5004-0041	Capillary MP35N 0.17x130 SI/SX	19,000	15,200
5004-0042	Capillary MP35N 0.12x130 M/SL	19,000	15,200
5004-0043	Capillary MP35N 0.12x130 M	19,000	15,200
5004-0044	Capillary MP35N 0.12x105 SL	19,000	15,200
5004-0045	Capillary MP35N 0.12x500 M/SL	26,000	20,800
5004-0046	Capillary MP35N 0.12x280 M/SL	21,000	16,800
5004-0047	Capillary MP35N 0.12x150 M/M	18,000	14,400
5005-0000	Bypass Capillary	10,000	8,000
5005-0046	Capillary MP35N 0.12x2000 U6-U6	78,000	62,400
5005-0057	Capillary ST 0,17x160 SL/SL	6,700	5,360
5005-0064	Bio Compatible Blank Nut V-M4	21,000	16,800
5005-0067	Front ferrules, 1/16in, gold, 10/Pk	21,000	16,800
5005-0068	Fitting ST 1.6, SI, 10/PK	28,000	22,400
5005-0069	Capillary MP35N 0,17x160 SL/SL	13,000	10,400
5005-0070	6-Column Sel. Bio Cap. Kit 0.12mm ID	957,000	765,600
5005-0072	Capillary MP35N 0.12x160 SL/S	13,000	10,400
5005-0073	Capillary MP35N 0.17x180	6,700	5,360
5005-0074	Capillary MP35N 0.25x250 SL/SL	13,000	10,400
5005-0441	Capillary Kit 1290 Inf II & III Bio	284,000	227,200
5005-0442	Fitting 1.6, SI, bio, 10/PK	31,000	24,800
5005-2970	2 Screw plugs for Stay Safe caps prep LC	8,400	6,720
5013-0002	Bio 2/10 Capillary Kit	325,000	260,000
5021-1816	CAPILLARY ST 0.17x105	5,300	4,240
5021-1817	Capillary ST 0.17x150	5,300	4,240
5021-1818	Flex capillary, 0.17x280 mm, no fitting	5,300	4,240
5021-1819	Flexible tubing, 400 mm, 0.17 mm id.	5,300	4,240
5021-1820	Flex capillary, 0.12x105mm, no fittings	5,300	4,240
5021-1821	Flexible tubing, 150 mm 1., 0.12 mm id	5,300	4,240
5021-1822	CAPILLARY ST 0.12x280	5,300	4,240
5021-1823	Flex tubing, red, 400mm 0.12mm id.	5,300	4,240
5022-2133	High Flow union, SS, no fitting	7,200	5,760
5022-2144	T-connector,PEEK 1/16in,0.57ul sewpt vol	9,800	7,840
5022-2145	True ZDV Union	5,400	4,320
5022-2165	High-Pressure Semi-prep filter 10um	22,000	17,600
5022-2166	10um Stainless Steel frits 10/PK	34,000	27,200
5022-2184	Union, stand LC flow, no fitting	5,800	4,640
5022-2185	Replacement SS frit, 0.5 um pore size	2,500	2,000
5022-6508	Flex capillary, 0.25x280mm no fittings	5,300	4,240
5022-6509	Flex capillary, 0.5x150mm no fittings	5,300	4,240
5022-6510	Flex capillary, 0.5x280mm no fitting	5,300	4,240
5022-6536	PEEK fitting long for 1/32in od capill.	3,000	2,400
5023-0232	Sealtight Screw SST 4MM	1,700	1,360
5023-0271	Frit for 1290 Inline Filter, 0.3um, 5/pk	19,000	15,200
5023-0282	Bit kit for torque wrench	6,100	4,880
5023-2254	Capillary ST 1000 X 0.12 S/S	13,000	10,400
5023-2502	Hex driver SW-6,35 slitted	8,100	6,480
5023-2503	Hex driver SW-5 slitted	4,500	3,600
5023-2504	Hex driver SW-4 slitted	3,600	2,880
5023-2508	Union Flat-Bottom 1/4-28 ESD	6,300	5,040
5023-2524	LC Tools Hex-Key Kit	5,700	4,560
5023-2625	Fitting Union MP35N	20,000	16,000
5023-2872	Fitting 1/4-28 for Tube-OD2.0mm ESD-PEEK	3,900	3,120

5023-2874	Fitting 1/4-28 for Tube-OD1.6mm ESD-PEEK	3,900	3,120
5023-2878	2.4m Tubing ESD PTFE OD2.0 ID1.2	8,600	6,880
5023-2882	6m Tube ESD PTFE OD2.5 ID1.6	16,000	12,800
5023-2883	Fitting 1/4-28, OD 2.5 ESD-PEEK (6/pack)	35,000	28,000
5023-2898	Fitting 1/4-28, OD 1.6 ESD-PEEK (6/pack)	35,000	28,000
5023-2899	Fitting 1/4-28, OD 2.0 ESD-PEEK (6/pack)	35,000	28,000
5023-3093	Adapter Nut FB 1/4-28-M 5/16-24-F ST	6,900	5,520
5023-3115	Solvent Inlet Filter 20um, 2/pack	28,000	22,400
5023-3150	ZDV Union M4-M4	7,100	5,680
5023-3343	Capillary ST 0.17x90 SX/SX	9,300	7,440
5023-3344	Capillary ST 0.12x90 SX/SX	9,300	7,440
5042-6461	Tube PEEK 0.13x5000mm, 1.6mm	12,000	9,600
5042-6462	Tube PEEK 0.18x5000mm, 1.6mm	10,000	8,000
5042-6463	Tube PEEK 0.25x5000mm, 1.6mm	9,200	7,360
5042-6500	Double winged 2 pc fitting 1/16in, 10/Pk	12,000	9,600
5042-8519	Micro T-Connector, PEEK, swept vol 29 nL	31,000	24,800
5042-9954	Tubing clip	1,900	1,520
5042-9967	Tubing Clip	1,000	800
5043-0259	Ferrule Front Sealed ID0 8	800	640
5043-0277	Blank nut long 10-32	5,200	4,160
5043-0915	SEALTIGHT-HANDLE	2,400	1,920
5043-0924	Front ferrule for quick connect/turn	700	560
5043-1190	Vent Valve	3,600	2,880
5043-1191	Thread adapter, PTFE GL45(M) to GL40(F)	17,000	13,600
5043-1192	Thread adapter PTFE GL45(M) - GPI 38(F)	17,000	13,600
5043-1193	Charcoal filter 58g w. time strip	16,000	12,800
5043-1195	Port Plug_ 1_8 NPT	6,100	4,880
5043-1196	Waste can GL45, 6 liter	3,700	2,960
5043-1198	Screw plug 1/8in for cap, PTFE, 2/pk	6,800	5,440
5043-1207	2 ports waste collector, PTFE	25,000	20,000
5043-1214	Fitting OD 1.6mm for cap, PFA (2/pk)	4,200	3,360
5043-1215	Fitting OD 2.6mm for cap, PFA (2/pk)	4,200	3,360
5043-1216	Fitting OD 3.2mm for cap, PFA (2/pk)	4,200	3,360
5043-1217	Stay Safe Cap GL45 1 port 1 vent vlv	12,000	9,600
5043-1218	Stay Safe Cap GL45 2 ports 1 vent vlv	14,000	11,200
5043-1219	Stay Safe Cap GL45 3 ports 1 vent vlv	17,000	13,600
5043-1220	Stay Safe Cap GL45 4 ports for waste	20,000	16,000
5043-1221	Waste can GL45, 6L + GL45 4 ports cap	25,000	20,000
5043-1222	InfinityLab Stay Safe Cap starter kit	45,000	36,000
5043-1278	Waste bin for Flex Bench	15,000	12,000
5043-1326	Stay Safe Cap S60 4 ports spectroscopy	32,000	25,600
5043-1333	Stay Safe Cap GL45 1-port PrepLC	14,000	11,200
5043-1334	Stay Safe Cap 2-ports PrepLC	17,000	13,600
5043-1335	Fitting for 4.7mm tubing, 2/pk	6,800	5,440
5043-1336	Stay Safe Cap S60 4 ports for waste	22,000	17,600
5043-1337	10-liter waste can, S60 thread	4,100	3,280
5043-1338	Stay Safe Waste KIT 10L	26,000	20,800
5043-1339	Stay Safe Purging Bottle	24,000	19,200
5043-1340	Stay Safe starter kit and purging bottle	64,000	51,200
5043-1540	6m Tube ESD PTFE OD1.6 ID0.8	22,000	17,600
5043-1695	GL38 4Port Sfty Cap Kit_02	36,000	28,800
5043-1698	InfinityLab Stay Safe cap, GL38, 1 port	18,000	14,400
5043-1789	Bottle Head Tubing, UCT, 2280mm, 4/pk	35,000	28,000
5043-1790	Bottle Head Tubing, 2280mm, 4/pk	5,900	4,720
5043-1816	Solvent Line Label Clip Set	1,700	1,360
5043-1826	Plate for 15 x 6ml Vial - Prep	21,000	16,800
5043-1847	Fittings ESD PEEK 5/16 to 3/16in, 12/pk	95,000	76,000

5043-1950	Waste Bin for Flex Bench MS	18,000	14,400
5043-1986	LC Waste Container (5L)	8,500	6,800
5043-1987	MS Waste Container	3,400	2,720
5061-3315	Capillary kit 0.12mm id capillaries	60,000	48,000
5061-3361	10 SST caps 10cm x .17mm id	13,000	10,400
5062-2418	1/16in Fittings and Ferrules, 10/Pk	24,000	19,200
5062-2483	Solvent tubing, 5m, 1.5mm id, 3mm od	5,000	4,000
5062-8517	Frit adapter, 3mm 4/PK	4,900	3,920
5062-8518	Male Nuts, 4PK	4,000	3,200
5062-8519	Ferrules 8/PK	5,000	4,000
5062-8541	Fingertight fittings, long 1/16 in 10/PK	13,000	10,400
5063-6531	Bottle cap with 3-hole insert	3,400	2,720
5063-6591	PEEK fitting finger-tight 1/16, 10/pack	8,700	6,960
5063-6592	1/32in Ferrule and SS lock ring, 10/PK	10,000	8,000
5063-6593	Fitting male, 1/16in, 4mm, SS, 10/pk	10,000	8,000
5063-6598	Tefzel ferrules/SS rings, 1/8 in 10/PK	6,700	5,360
5063-6599	PPS nuts, 1/8 in, 1/4-28 thread 10/PK	4,300	3,440
5064-8273	Semi-prep Filter Assy, 0.5um Pore Size	32,000	25,600
5065-4410	6 fittings, 2 plugs, PEEK for u-valves	29,000	23,200
5065-4421	Solvent; bottle, clear, 2 L, 2 inlets	21,000	16,800
5065-4422	Double winged PEEK nut+ferrule 1/32 10PK	23,000	18,400
5065-4423	1/32in ferrule and SS lock ring 10PK	20,000	16,000
5065-4426	Colored finger-tight PEEK fittings 10/PK	9,200	7,360
5065-4454	Long fittings and ferrules, SS, 10/PK	20,000	16,000
5065-4500	Hi Flow Inline Filter Kit, Glass, 12 uLm	127,000	101,600
5065-9906	LC-MS Connection Capillary	23,000	18,400
5065-9926	Flex capillary, 0.5x800 mm no fittings	12,000	9,600
5065-9927	Flex capillary, 0.5x105mm no fittings	5,300	4,240
5065-9930	FLEX capillary, 0.25x800mm no fittings	6,000	4,800
5065-9931	Flexible Capillary 0.17mm ID x 200mm	5,300	4,240
5065-9932	Flexible Capillary 0.17mm ID x 700mm	6,000	4,800
5065-9933	Flexible Capillary .17mm ID x 600mm	6,000	4,800
5065-9935	Flex capillary, 0.12x200mm no Fittings	5,300	4,240
5065-9937	Capillary/Fitting Starter Kit .12mm ID	134,000	107,200
5065-9938	Capillary/Fitting Starter Kit 20ul Flow	163,000	130,400
5065-9939	Capillary/Fitting Starter Kit .17mm id	109,000	87,200
5065-9947	Rapid Resolution HT Capillary Kit	75,000	60,000
5065-9948	Fitting screws, SS, 10-32, 4mm, 5/pk	7,600	6,080
5065-9950	SS ring and ferrule, 2mm, 5-pk	50,000	40,000
5065-9963	Capillary ST 0.17x900	5,300	4,240
5065-9964	Flex capillary. 0.12x500mm no fittings	5,300	4,240
5065-9967	X-long fittings and ferrules, SS, 10/pk	22,000	17,600
5065-9971	Barbed Y-Connector,PP for 3/16in ID Tube	3,600	2,880
5065-9979	Flexible Capillary .25mm ID x 250mm	5,300	4,240
5065-9980	Flexible Capillary 25mm ID x 320mm	5,300	4,240
5067-1540	SS Hex Head Nut with PEEK Ferrule 6/pk	14,000	11,200
5067-1547	PEEK ferrule 1/16 inch max 600 bar 6/pk	7,500	6,000
5067-1602	In-Line Filter Assembly, with 4.6 x 0.5	61,000	48,800
5067-1603	In-Line Filter Assembly, with 2.1 x 0.2	61,000	48,800
5067-1606	Inline Filter Assembly, Rigid, 4.6 x 0.5	72,000	57,600
5067-1607	Inline Filter Assembly, Rigid, 2.1 x 0.2	72,000	57,600
5067-1610	Quick Change filter discs 2.1mm id 0.2µm	23,000	18,400
5067-1611	Quick Change filter discs 2.1mm id 0.5µm	23,000	18,400
5067-1612	Quick Change filter discs 4.6mm id 0.2µm	23,000	18,400
5067-1613	Quick Change filter discs 4.6mm id 0.5µm	23,000	18,400
5067-1614	Quick Change filter discs 4.6mm id 2.0µm	23,000	18,400
5067-1620	Solvent Purifier Assy 2.1x20mm	82,000	65,600

5067-1621	Solvent Purifier Assy 3.0x75mm	82,000	65,600
5067-1622	Solvent Purifier Assy 4.6x50mm	82,000	65,600
5067-1623	Solvent Purifier Cartridge 2.1x20mm	60,000	48,000
5067-1624	Solvent Purifier 2.1x20mm, 5/pk	246,000	196,800
5067-1625	Solvent Purifier Cartridge 3.0x75mm	60,000	48,000
5067-1626	Solvent Purifier 3.0x75mm, 5/pk	246,000	196,800
5067-1627	Solvent Purifier Cartridge 4.6x50mm	60,000	48,000
5067-1628	Solvent Purifier 4.6x50mm, 5/pk	246,000	196,800
5067-4684	Capillary ST 0.12x340 S/SX	7,400	5,920
5067-4685	SS-Capillary 90x0,12mm ns ns 1sh 1xlg	6,800	5,440
5067-4686	Capillary ST 0.12x150 SL/SX	7,300	5,840
5067-4687	Capillary ST 0.12x280 SX/SX	7,800	6,240
5067-4688	SS-Capillary 120x0,12mm ns ns 1xlg 1xlg	6,700	5,360
5067-4689	Capillary ST 0.12x200 SX/S	7,200	5,760
5067-4719	Capillary ST 0.17x120 SX/SX	9,200	7,360
5067-4721	Capillary ST 0.17 x 200mm S-SX ns-ps	13,000	10,400
5067-4722	Capillary ST 0.17 x 280mm SX-SX ns-ns	13,000	10,400
5067-4723	Capillary ST 0.17 x 340mm SL-SX ns-ns	13,000	10,400
5067-4724	Capillary ST 0.17 mm x 90 mm S/SX	12,000	9,600
5067-4733	1200Bar removable fitting	7,500	6,000
5067-4737	Capillary ST 0,17mm x 150 mm M/M	10,000	8,000
5067-4741	Bio-inert union, 600 bar	11,000	8,800
5067-5104	Capillary ST 0.12x150 SV/M	13,000	10,400
5067-5106	Capillary ST 0.12x90 SL/M	7,500	6,000
5067-5107	Capillary ST 0.12x280 SV/M	15,000	12,000
5067-5108	SST Capillary 340x0.17mm ps-ns SW M4	12,000	9,600
5067-5109	Capillary ST 0.17x90 SL/M	8,200	6,560
5067-5110	Capillary ST 0.17x90 SV/M	15,000	12,000
5067-5111	Capillary ST 0.17x150 SV/M	16,000	12,800
5067-5112	Capillary ST 0.17x280 SV/M	18,000	14,400
5067-5113	Capillary ST 0.17 x 250mm SL/M	11,000	8,800
5067-5120	SST Cap. 0.17mm ID 700mm SW-1/16/M4	23,000	18,400
5067-5695	UHP-FF Fitting, bio-inert	15,000	12,000
5067-5709	Capillary ST 0,25x250 S-S	7,600	6,080
5067-5713	Capillary ST 0.25x500 S-S	8,500	6,800
5067-5749	Capillary ST 0.17x900 SX/SX	6,100	4,880
5067-5750	Capillary ST 0.17x600 SX/SX	5,800	4,640
5067-5917	InfinityLab Column Identification Tag	5,200	4,160
5067-5918	Seal 500ul	6,700	5,360
5067-5926	Capillary ST 0.35x420mm M/M 40ul	10,000	8,000
5067-5957	Quick Connect Assy ST 0.12x105mm	45,000	36,000
5067-5958	Quick Connect Assy ST 0.12x150mm	45,000	36,000
5067-5959	Quick Connect Assy ST 0.12x220mm	45,000	36,000
5067-5960	Quick Connect Assy ST 0.12x280mm	45,000	36,000
5067-5961	Quick Connect Assy ST 0.075x105mm	45,000	36,000
5067-5963	InfinityLab Low Dispersion Kit	397,000	317,600
5067-5965	Quick Connect LC fitting	36,000	28,800
5067-5966	Quick Turn LC Fitting	18,000	14,400
5067-6127	BLANK-NUT-V	4,000	3,200
5067-6129	Capillary ST 0.17x300mm S/SX	8,600	6,880
5067-6138	InfinityLab Valve Holder Kit Right	8,500	6,800
5067-6139	InfinityLab Valve Holder Kit Left	8,500	6,800
5067-6141	Blank Nut V-M4	6,800	5,440
5067-6163	Quick Connect Assy ST 0.075x150mm	45,000	36,000
5067-6164	Quick Connect Assy ST 0.075x220mm	45,000	36,000
5067-6165	Quick Connect Assy ST 0.075x280mm	45,000	36,000
5067-6166	Quick Connect Assy ST 0.17x105mm	45,000	36,000

5067-6167	Quick Connect Assy ST 0.17x150mm	45,000	36,000
5067-6168	Quick Connect Assy ST 0.17x220mm	45,000	36,000
5067-6169	Quick Connect Assy ST 0.17x280mm	45,000	36,000
5067-6188	Capillary ST 0,17x500 SL/M	10,000	8,000
5067-6210	Quick connect assy ST 0.25x105mm	45,000	36,000
5067-6602	Quick Connect/Quick Turn Assy 0.075x105	63,000	50,400
5067-6624	Disposable syringes 20ml 10/PK	1,800	1,440
5067-6643	Capillary ST 0.35x104mm M/M 10ul	8,300	6,640
5067-6644	Capillary ST 0.35x208mm M/M 20ul	9,200	7,360
5067-6645	Capillary ST 0.35x831mm M/M 80ul	11,000	8,800
5067-6646	Capillary ST 0.35x1247mm M/M 120ul	12,000	9,600
5067-6647	Capillary ST 0.35x1870mm M/M 180ul	16,000	12,800
5067-6820	Capillary ST 0,25x80 SX/RLO	20,000	16,000
5067-6821	Capillary ST 0,12x100 SX/SX	8,100	6,480
5067-6831	Holder ManInject-Prep	16,000	12,800
5067-6840	20psi Back Pressure Regulator	42,000	33,600
5067-6852	Holder Manual Injector-Prep Column Comp.	21,000	16,800
5067-6867	Column Sel. Cap. Kit PREP 4-8 mL/min	62,000	49,600
5067-6868	Column Sel. Cap. Kit PREP 15-40 mL/min	48,000	38,400
5067-6869	Column Sel. Cap. Kit PREP 40-80 mL/min	50,000	40,000
5067-6870	Column Sel. Cap. Kit PREP 80-200 mL/min	51,000	40,800
5067-7012	Tubing L300mm EL	18,000	14,400
5191-4336	Filter membrane PTFE 47mm 0.45um 100/pk	52,000	41,600
5191-4337	Filter memb Reg Cell. 47mm 0.45um 100/pk	27,000	21,600
5191-4338	Filter membrane Nylon 47mm 0.45um 100/pk	25,000	20,000
5191-4339	Filter membrane PTFE 47mm 0.20um, 100/pk	52,000	41,600
5191-4340	Filter memb cellulose 47mm 0.2um 100/pk	27,000	21,600
5191-4341	Filter membrane Nylon 47mm 0.20um 100/pk	25,000	20,000
5191-6776	InfinityLab Solvent Filtration Assembly	81,000	64,800
5191-6777	InfinityLab Solvent Filtration Funnel	22,000	17,600
5191-6778	InfinityLab Sol. Filtration holder base	29,000	23,200
5191-6779	InfinityLab Solvent Filtration clamp	14,000	11,200
5191-6780	InfinityLab Solvent Filtration 1L Flask	31,000	24,800
5191-6781	InfinityLab Solvent Filtration 2L Flask	34,000	27,200
5432-0062	InfinityLab Cartridge Holder Clip	4,500	3,600
5500-1157	Capillary ST 0,12x500 SL/S	9,600	7,680
5500-1159	Capillary ST 0.17x100 SX/S-2.3	6,700	5,360
5500-1170	Capillary ST 0.12x280 SL/SL4	9,000	7,200
5500-1171	Quick Connect Capillary ST 0.12mmx220mm	9,000	7,200
5500-1172	Quick Connect Capillary ST 0.12mmx150mm	9,000	7,200
5500-1173	Quick Connect Capillary ST 0.12mmx105mm	9,000	7,200
5500-1174	Quick Connect Capillary ST 0.075mmx105mm	9,000	7,200
5500-1175	Quick Connect Capillary ST 0.075x150mm	9,000	7,200
5500-1176	Quick Connect Capillary ST 0.075x220mm	9,000	7,200
5500-1177	Quick Connect Capillary ST 0.075x250mm	9,000	7,200
5500-1178	Quick Connect Capillary ST 0.075x280mm	9,000	7,200
5500-1179	Quick Connect Capillary ST 0.12x400mm	9,000	7,200
5500-1180	Quick Connect Capillary ST 0.12x500mm	9,000	7,200
5500-1181	Capillary ST 0.17x105 SX/SL4	9,000	7,200
5500-1182	Capillary ST 0.17x150 SX/SL4	9,000	7,200
5500-1183	Quick Connect Capillary ST 0.17x220mm	9,000	7,200
5500-1188	Quick Turn Capillary ST 0.12x105mm	6,300	5,040
5500-1189	Quick Turn Capillary ST 0.12x150mm	6,300	5,040
5500-1190	Quick Turn Capillary ST 0.12x200mm	6,300	5,040
5500-1191	CAPILLARY ST 0.12X280, Long Socket	6,300	5,040
5500-1192	Quick Turn Capillary ST 0.12x500mm	6,300	5,040
5500-1193	CAPILLARY ST 0.17X105	6,300	5,040

5500-1194	Capillary ST 0.17x150, Long Socket	6,300	5,040
5500-1195	Quick Turn Capillary ST 0.17 x200mm	6,300	5,040
5500-1196	Quick Turn Capillary ST 0.17x280mm	6,300	5,040
5500-1197	Quick Turn Capillary ST 0.17x500mm	6,300	5,040
5500-1198	Quick Turn Capillary ST 0.075x105mm	6,300	5,040
5500-1199	Capillary ST 0.12x130 SL/M	10,000	8,000
5500-1200	QUICK TURN CAPILLARY ST 0.12X130 M	8,100	6,480
5500-1201	Capillary SST 0.12x105mm SL	12,000	9,600
5500-1202	Capillary SST 0.12x500mm M4-SL	11,000	8,800
5500-1203	Capillary SST 0.12x280mm M4-SL	11,000	8,800
5500-1204	Capillary SST 0.12x150mm M4-M4	11,000	8,800
5500-1205	Quick Turn Capillary ST 0.075x500mm	12,000	9,600
5500-1206	Quick Turn Capillary ST 0.075x250mm	9,000	7,200
5500-1209	Capillary ST 0.12x200 SX/S	9,000	7,200
5500-1210	Capillary ST 0.12x500 SL/SX	9,900	7,920
5500-1217	CAPILLARY ST 0.17x900 SI/SX	9,500	7,600
5500-1228	CAPILLARY ST 0.3X80 SL/SL	8,100	6,480
5500-1230	Quick Connect Capillary ST 0.17x280mm	9,000	7,200
5500-1231	Quick Connect Capillary ST 0.17x500mm	9,000	7,200
5500-1232	Quick Turn Capillary ST 0.075x150mm	6,300	5,040
5500-1233	Quick Turn Capillary ST 0.12x180mm	6,300	5,040
5500-1234	Quick Turn Capillary ST 0.17x180mm	6,300	5,040
5500-1235	Quick Turn Capillary ST 0.17x380mm	6,300	5,040
5500-1236	Quick Turn Capillary ST 0.17x400mm	6,300	5,040
5500-1237	Quick Turn Capillary ST 0.17x700mm	6,300	5,040
5500-1238	Capillary ST 0.12x105 SL/SL	7,900	6,320
5500-1240	Capillary ST 0.17x105 SL/SL	7,900	6,320
5500-1242	Capillary SST 0.12x30mm rigid	10,000	8,000
5500-1243	Capillary SST 0.12x50mm long Socket	10,000	8,000
5500-1245	Capillary ST 0.17x400 SI-SI	9,600	7,680
5500-1246	Capillary ST 0.17x500 SI-SI	10,000	8,000
5500-1247	Quick Connect Capillary ST 0.12x120mm	8,600	6,880
5500-1248	Capillary ST 0.17x120 SX/SL4	8,600	6,880
5500-1249	Capillary ST 0,12x120 SL/SL Long Socket	8,400	6,720
5500-1250	CAPILLARY ST 017X120 SL/SL	8,400	6,720
5500-1253	Capillary ST 0.17x130 SX-S	9,600	7,680
5500-1258	Quick Connect capillary ST 0.25x105mm	9,000	7,200
5500-1259	Quick Connect capillary ST 0.25x150mm	9,000	7,200
5500-1260	Quick Connect capillary ST 0.25x400mm	9,000	7,200
5500-1261	Capillary ST 0.25x105 U6	6,300	5,040
5500-1262	Quick Turn Capillary ST 0.25x150mm	6,300	5,040
5500-1263	Quick Turn Capillary ST 0.25x400mm	6,300	5,040
5500-1270	Capillary ST 0.12x170 SI/M	9,200	7,360
5500-1272	Capillary ST 0.12x800 SL/M4	11,000	8,800
5500-1276	Quick Connect Capillary PK/ST 0.17x280mm	36,000	28,800
5500-1277	Quick Connect Capillary PK/ST 0.17x500mm	36,000	28,800
5500-1278	Capillary MP35N 0.17x100 SL-SL	13,000	10,400
5500-1279	Capillary MP35N 0.12x500 SI-SI	21,000	16,800
5500-1280	Capillary MP35N 0.17x250 SL/SL	16,000	12,800
5500-1282	Capillary MP35N 0.17x900 SI/SX	23,000	18,400
5500-1283	Capillaries MP35N 0.25x80 SI/SI	19,000	15,200
5500-1284	Capillary MP35N 0.17x120 SI/SX	19,000	15,200
5500-1286	Capillary ST 0.12x340 SL/M	11,000	8,800
5500-1288	Quick Turn Capillary ST 0.12x150 M4	8,100	6,480
5500-1289	Capillary ST 0.12x150 M/SL4	9,000	7,200
5500-1290	Quick Turn Capillary ST 0.17x150 M4	8,100	6,480
5500-1291	Quick Connect Capillary ST 0.17x150 M4	9,000	7,200

5500-1300	Capillary ST 0.12x85 M/M	9,200	7,360
5500-1301	Capillary ST 0.12x170 M/M	10,000	8,000
5500-1302	Capillary ST 0.12x340 M/M	12,000	9,600
5500-1303	Capillary ST 0.12x680 M/M	17,000	13,600
5500-1305	Capillary ST 0.12x500 M/M	7,700	6,160
5500-1306	Capillary ST 0.12x700 M/M	7,900	6,320
5500-1308	Capillary ST 0,3x650 SX/SX	14,000	11,200
5500-1309	Capillary ST 0,5x650 SX/SX	7,800	6,240
5500-1314	Capillary ST 0,3x650 SX	12,000	9,600
5500-1315	Capillary ST 0,5x650 SX	6,900	5,520
5500-1316	Capillary ST 0,3x500 SX	10,000	8,000
5500-1317	Capillary ST 0,5x500 SX	6,900	5,520
5500-1318	Capillary ST 0,6x650 SX/SX	8,700	6,960
5500-1319	Capillary ST 0,6x650 SX	6,900	5,520
5500-1320	Capillary ST 0,6x500 SX	6,900	5,520
5500-1329	Capillary ST 0,12x70 SI/SI	6,900	5,520
5500-1330	Capillary ST 0.25x700 SI-SI	6,900	5,520
5500-1333	Capillary ST 0,5x600 Long Socket	4,000	3,200
5500-1334	Capillary ST 0,5x400 Long Socket	3,700	2,960
5500-1335	Capillary ST 0,5x800 Long Socket	4,000	3,200
5500-1336	Capillary ST 0,5x280 Long Socket	3,700	2,960
5500-1341	Knitted Delay Coil ESD 1m x 0.5mm 0.2mL	92,000	73,600
5500-1342	Capillary ST Flow Cell 4-8mL/min	13,000	10,400
5500-1343	Capillary ST Flow Cell 15-40mL/min	13,000	10,400
5500-1344	Capillary ST Flow Cell 40-80mL/min	13,000	10,400
5500-1345	Capillary ST Flow Cell 80-200mL/min	14,000	11,200
5500-1346	Capillary ST 0.17x500 M/M	11,000	8,800
5500-1347	Capillary ST 0.17x700 M/M	11,000	8,800
5500-1376	Capillary ST 0.12x170 M M Transfer	11,000	8,800
5500-1384	Capillary ST 0,5x800 SX	6,900	5,520
5500-1385	Capillary ST 0,5x1000 SX	6,900	5,520
5500-1386	Capillary ST 0,5x550 SX/SI	7,100	5,680
5500-1387	Capillary ST 0,6x 800 SX	6,900	5,520
5500-1388	Capillary ST 0,6x1000 SX	7,800	6,240
5500-1389	Capillary ST 0,7x550 SX/SI	8,700	6,960
5500-1390	Capillary ST 0,94x650 SX/SX	8,700	6,960
5500-1391	Capillary ST 0,94x500 SX	7,800	6,240
5500-1392	Capillary ST 0,94x800 SX	8,700	6,960
5500-1393	Capillary ST 0,94x650 SX	7,800	6,240
5500-1394	Capillary ST 0,94x1000 SX	8,700	6,960
5500-1395	Capillary ST 0,94x550 SX/SI	8,700	6,960
5500-1398	Capillary ST 0,12x1200 SX/SX	11,000	8,800
5500-1406	Capillary ST 0,3x800 SX	14,000	11,200
5500-1407	Capillary ST 0,3x1000 SX	17,000	13,600
5500-1408	Capillary ST 0,3x550 SX/SI	14,000	11,200
5500-1410	FittingAdapter 1-4 28 to coned-10-32 ESD	6,900	5,520
5500-1412	Capillary ST 0,3x1900 SX/SI	15,000	12,000
5500-1413	Capillary ST 0,6x1900 SX/SI	11,000	8,800
5500-1414	Capillary ST 0,7x1900 SX/SI	15,000	12,000
5500-1415	Capillary ST 1x1900 SX/SI	14,000	11,200
5500-1416	Capillary ST 0.12x340 M/SL4	8,100	6,480
5500-1419	Capillary MP35N 0_17x500 SI-SI	21,000	16,800
5500-1420	Capillary MP35N 0.25x250 SI/SI	19,000	15,200
5500-1421	Capillary MP35N 0.25x130 SI/SI	19,000	15,200
5500-1422	Capillary ST 0.25x1100 NX/NX	8,700	6,960
5500-1423	Capillary ST 0.17x1150 SX	6,900	5,520
5500-1424	Capillary ST 0.25x1200 NX/NX	13,000	10,400

5500-1425	Capillary ST 0,25x2200 NX/NX	14,000	11,200
5500-1427	Capillary ST 0,6x100 SX/SX	6,900	5,520
5500-1429	Solvent Distribution Tubing Kit	8,700	6,960
5500-1430	Capillary ST 0,17x800 SX	6,200	4,960
5500-1431	Capillary ST 0.17x800 NX/NX	11,000	8,800
5500-1432	Capillary ST 0.12x300 NX/NX	10,000	8,000
5500-1433	Capillary ST 0.12x350 SX U6	7,800	6,240
5500-1434	Capillary ST 0,12x2000 SX/U6	13,000	10,400
5500-1435	Capillary ST 0,3x1150 SX	18,000	14,400
5500-1436	Capillary ST 0,3x1450 NX/NX	24,000	19,200
5500-1437	Capillary ST 0,3x750 SX/SI	14,000	11,200
5500-1438	Capillary ST 0,5x1150 SX	6,900	5,520
5500-1439	Capillary ST 0,5x1450 NX/NX	8,300	6,640
5500-1440	Capillary ST 0,5x750 SX/SI	7,800	6,240
5500-1441	Capillary ST 0,6x1150 SX	8,000	6,400
5500-1442	Capillary ST 0,6x1450 NX/NX	11,000	8,800
5500-1443	Capillary ST 0,7x750 SX/SI	10,000	8,000
5500-1444	Capillary ST 0,94x1150 SX	11,000	8,800
5500-1445	Capillary ST 0,94x1450 NX/NX	15,000	12,000
5500-1446	Capillary ST 0,94x750 SX/SI	9,500	7,600
5500-1447	Capillary ST 0,94x60 SI	3,800	3,040
5500-1448	Capillary ST 0,3x500 Long Socket	7,800	6,240
5500-1449	Capillary ST 0,3x550 SX	10,000	8,000
5500-1450	Capillary ST 0,3x900	7,800	6,240
5500-1451	Capillary ST 0,5x500 Long Socket	4,300	3,440
5500-1452	Capillary ST 0,5x550 SX	6,900	5,520
5500-1453	Capillary ST 0,5x900	7,800	6,240
5500-1454	Capillary ST 0,6x500	4,300	3,440
5500-1455	Capillary ST 0,6x550 SX	6,900	5,520
5500-1456	Capillary ST 0,6x900	4,500	3,600
5500-1457	Capillary ST 0,94x500	4,500	3,600
5500-1458	Capillary ST 0,94x550 SX	7,800	6,240
5500-1459	Capillary ST 0,94x900	6,900	5,520
5500-1461	Capillary ST 0,25x800 NX/NX	12,000	9,600
5500-1462	Capillary ST 0,17x1200 NX/NX	11,000	8,800
5500-1473	Capillary MP35N 0.3x80 SL/SL	13,000	10,400
5500-1474	Quick connect capillary MP35N 0.075x105	21,000	16,800
5500-1475	Quick connect capillary MP35N 0.075x150	21,000	16,800
5500-1576	Quick Connect Capillary MP35N 0.075x220	21,000	16,800
5500-1577	Quick Connect Capillary MP35N 0.075x280	24,000	19,200
5500-1578	Quick Connect Capillary MP35N 0.12x105	21,000	16,800
5500-1579	Quick Connect Capillary MP35N 0.12x150	21,000	16,800
5500-1580	Quick Connect Capillary MP35N 0.12x220	21,000	16,800
5500-1581	Capillary MP35N 0.12x280 SX/SL4	24,000	19,200
5500-1582	Quick Connect Capillary MP35N 0.12x400	24,000	19,200
5500-1583	Quick Connect Capillary MP35N 0.12x500	24,000	19,200
5500-1584	Quick Connect Capillary MP35N 0.17x105	21,000	16,800
5500-1585	Quick Connect Capillary MP35N 0.17x150	21,000	16,800
5500-1586	Quick Connect Capillary MP35N 0.17x220	21,000	16,800
5500-1587	Quick Connect Capillary MP35N 0.17x280	25,000	20,000
5500-1588	Quick Connect Capillary MP35N 0.17x500	24,000	19,200
5500-1589	Quick Turn Capillary MP35N 0.075x105	17,000	13,600
5500-1590	Quick Turn Capillary MP35N 0.075x150	17,000	13,600
5500-1591	Quick Turn Capillary MP35N 0.075x250	17,000	13,600
5500-1592	Quick Turn Capillary MP35N 0.075x500	19,000	15,200
5500-1593	Quick Turn Capillary MP35N 0.12x105	17,000	13,600
5500-1594	Quick Turn Capillary MP35N 0.12x150	17,000	13,600

5500-1595	Quick Turn Capillary MP35N 0.12x200	17,000	13,600
5500-1596	Capillary MP35N 0.12x280, Long Socket	19,000	15,200
5500-1597	Quick Turn Capillary MP35N 0.12x400	19,000	15,200
5500-1598	Quick Turn Capillary MP35N 0.12x500	19,000	15,200
5500-1599	Quick Turn Capillary MP35N 0.17x105	17,000	13,600
5500-1600	Quick Turn Capillary MP35N 0.17x150	17,000	13,600
5500-1601	Quick Turn Capillary MP35N 0.17x200	17,000	13,600
5500-1602	Quick Turn Capillary MP35N 0.17x280	19,000	15,200
5500-1603	Quick Turn Capillary MP35N 0.17x400	19,000	15,200
5500-1604	Quick Turn Capillary MP35N 0.17x500	19,000	15,200
5500-1605	Quick Turn Capillary MP35N 0.17x700	19,000	15,200
5500-1607	Quick Turn Capillary MP35N 0.12x700	18,000	14,400
5500-1608	Capillary MP35N 0.17x1400	25,000	20,000
5500-1609	Capillary MP35N 0.5x700	17,000	13,600
9301-6341	Solvent bottle, amber, 2L	25,000	20,000
9301-6342	Solvent bottle, clear 2L	6,800	5,440
9301-6523	Solvent bottle clear, 500ml with cap	4,200	3,360
9301-6524	Solvent bottle clear, 1000ml	2,500	2,000
9301-6525	Solvent bottle amber 500ml with cap	16,000	12,800
9301-6526	Solvent bottle amber, 1000ml	6,300	5,040
9301-6527	Solvent Bottle Clear 125ml With Cap	2,100	1,680
9301-6528	Solvent bottle clear, 1000ml with cap	3,000	2,400
9301-6529	Identification Silicone ring (2x4 rings)	5,000	4,000
9301-6530	Sticker for solvent bottles (100/pack)	16,000	12,800
9301-6531	Solvent Bottle Clear 500ml Pressure Plus	5,100	4,080
9301-6532	Solvent Bottle Clear 100ml Pressure Plus	2,800	2,240
G1375-87319	Capillary FS/PK 0.05 x 700	13,000	10,400
G5667-81000	Capillary PK/ST 0.17x105mm RLO/RLO BIO	71,000	56,800
G5667-81001	Capillary PK/ST 0.17x150mm RLO/RLO BIO	71,000	56,800
G5667-81002	Capillary PK/ST 0.17x200mm RLO/RLO BIO	72,000	57,600
G5667-81003	Capillary PK/ST 0.17x300mm RLO/RLO BIO	72,000	57,600
G5667-81004	Capillary PK/ST 0.17x400mm RLO/RLO BIO	73,000	58,400
G5667-81005	Capillary PK/ST 0.17x500mm RLO/RLO BIO	74,000	59,200
G5667-81007	Capillary PK/ST 0.17x700mm RLO/RLO BIO	75,000	60,000
G5667-81008	Seat PK/ST 0.17x105 RLO/RLO Bio	90,000	72,000
G7116-68004	Column Holder Clamp (2/pk)	5,200	4,160
G7161-60042	Bottle Head Assembly Prep EL	34,000	27,200

ガスフィルタ 20%OFF 2025年2月5日～3月28日まで			
部品番号	品名	通常定価	キャンペーン価格
19199N	Install Kit for GCs w/Gas Purifiers	387,000	309,600
19251C	Split vent trap 5890 GC (internal)	29,000	23,200
2710100300	Exhaust fltr,repl cartridge,1/pk	28,000	22,400
3150-0559	Particle beam frit pack 10/PK	18,000	14,400
394977002	Gas purifier,oxygen filer,1/8 in,1/pk	54,000	43,200
5043-0403	Ring Nut, Gas Clean Filter System	1,800	1,440
5060-9084	Cond. Moisture trap, 1/8 in.	39,000	31,200
5060-9096	Cond. Hydrocarbon trap, 1/8 in.	49,000	39,200
5182-9201	Glass Indicating O2 Trap, 1/8 in.	36,000	28,800
5182-9202	Glass Indicating O2 Trap, 1/8 in., SS	40,000	32,000
5182-9211	Glass Indicating H2O Trap, 1/8 in.	30,000	24,000
5182-9401	Glass Indicating O2 Trap, 1/4 in.	36,000	28,800
5182-9402	Glass Indicating O2 Trap, 1/4 in., SS	40,000	32,000
5182-9411	Glass Indicating H2O Trap, 1/4 in.	30,000	24,000
5190-1414	ReNEWable Gas Purifier-Return Package	3,900	3,120
5190-9071	Chemical Ionization Gas Purifier	60,000	48,000

681008600	Filter Argon ICP-OES short	30,000	24,000
6810010000	Filter Argon ICP-OES Vista, 700 Series	33,000	26,400
8500-1233	Refill, sorb trap	24,000	19,200
ACR	Refill, Hydrocarbon Trap, 1pt	14,000	11,200
BACR	Refill, Big Hydrocarbon Trap, 1500cc	12,000	9,600
BHT-2	Trap, Big Hydrocarbon, 1/8in	49,000	39,200
BHT-4	Big Hydrocarbon Trap, 1/4in fittings	49,000	39,200
BMSR-1	Refill, Big H2O Trap, 1500cc	14,000	11,200
BMT-2	Trap, Big H2O, 1/8in	49,000	39,200
BMT-4	Trap, Big H2O, 1/4in	49,000	39,200
BOT-2	Trap, Big O2, 1/8in	49,000	39,200
BOT-4	Trap, Big O2, 1/4in	49,000	39,200
CP17967	Gas Clean FID Kit Diff MakeUp (1/8in)	251,000	200,800
CP17969	Gas Clean Filter CO2	31,000	24,800
CP17970	Gas Clean Filter Oxygen	29,000	23,200
CP17971	Gas Clean Filter Moisture	29,000	23,200
CP17971P	Process Gas Clean Filter Moisture	53,000	42,400
CP17972	Gas Clean Filter Hydrocarbon	33,000	26,400
CP17973	Gas Clean Filter Carrier Gas	43,000	34,400
CP17974	Gas Clean Filter Kit for Carrier Gas	65,000	52,000
CP17975	Gas Clean Filter Kit for Carrier Gas	67,000	53,600
CP17976	Gas Clean Carrier Gas filter kit (1/8in)	116,000	92,800
CP17977	Gas Clean Carrier Gas filter kit (1/4in)	116,000	92,800
CP17978	Gas Clean Carrier Gas filter install.kit	122,000	97,600
CP17981	Gas Clean Filter Starter Kit for TCD/ECD	169,000	135,200
CP17982	CO2 Filter Kit with 1/4 in Connections	162,000	129,600
CP17983	CO2 Filter Kit with 1/8 in Connections	162,000	129,600
CP17984	High Flow Connecting Unit (1/4 in)	88,000	70,400
CP17988	Gas Clean Carrier Gas Kit for 7890	55,000	44,000
CP179880	Gas Clean Kit for 8890 and 8860 GC	96,000	76,800
CP179885	Gas Clean Sensor	26,000	20,800
CP17989	Gas Clean Filter Sulfur	43,000	34,400
CP17990	Gas Clean Filter SCD Kit	113,000	90,400
CP17995	Intuvo Gas Clean Filter Kit	97,000	77,600
CP736520	4-position Connecting Unit 1/8 in	169,000	135,200
CP736530	Gas Clean Filter FID Kit 1/8 in	258,000	206,400
CP738406	2-position Connecting Unit 1/4 in	88,000	70,400
CP738407	2-position Connecting Unit 1/8 in	88,000	70,400
CP738408	Gas Clean Filter Kit for TCD	167,000	133,600
CP742950	Connecting Unit, GC Mount	45,000	36,000
CP743056	Duo Bed Pencil Filter	40,000	32,000
CP743057	Single Bed Pencil Filter	24,000	19,200
CP7952	Filter in-line dust 1/8 in	24,000	19,200
CP7978	Filter Connecting Unit -no baseplate	20,000	16,000
CP7980	1-position Connecting Unit 1/4 in	47,000	37,600
CP7980P4	Process Connecting Unit 1/4 in	99,000	79,200
CP7980P6	Process Connecting Unit 6 mm	94,000	75,200
CP7981	Wall Mounting Bracket, Gas Clean	7,900	6,320
CP7983	Viton o-rings for connecting unit	1,200	960
CP7986	Male Connector, 1/4 in with dust filter	3,500	2,800
CP7986SS	SS Male Connector 1/4 in w/ dust filter	11,000	8,800
CP7986SS6	SS Male Connector 6 mm w/ dust filter	10,000	8,000
CP7987	Flush Head for Connecting Unit	16,000	12,800
CP7988	1-position Connecting Unit 1/8 in	47,000	37,600
CP7988P3	Process Connecting Unit 3 mm	89,000	71,200
CP7988P8	Process Connecting Unit 1/8 in	89,000	71,200
CP7989	4-position Connecting Unit 1/4 in	169,000	135,200

CP7995	Gas Clean Filter FID Kit 1/4 in	258,000	206,400
CP82117	Male Connector, 1/8 in with dust filter	4,200	3,360
CP82117SS	SS Male Connector 1/8 in w/ dust filter	10,000	8,000
CP82117SS3	SS Male Connector 3 mm w/ dust filter	10,000	8,000
G3440-60003	New-ReNEWable Gas Purifier Crtg	98,000	78,400
G3440-60004	ReNEWable Gas Purifier - New StartUp Kit	146,000	116,800
G3440-69003	EXCH-ReNEWable Gas Recycled Crtg	88,000	70,400
G3440-80007	ReNEWable Gas Purifier - Base Only	69,000	55,200
G3440-90000	ReNEWable Gas Purifier Cartridge Manual	500	400
G3440-90001	ReNEWable Gas Purifier - System Manual	1,200	960
G8010-60136	Filter Argon ICP-OES 5100 Series	32,000	25,600
HCRMS	Refill, Hydrocarbon-H2O Trap ,1pt	14,000	11,200
HMT200-2	Trap, Hydrocarbon-H2O, 1/8in, 200cc	24,000	19,200
HMT200-4	Trap, Hydrocarbon-H2O, 1/4in, 200cc	24,000	19,200
HT200-2	Trap, Hydrocarbon, 1/8in, 200cc	25,000	20,000
HT200-4	Trap, Hydrocarbon, 1/4in, 200cc	26,000	20,800
HT3-2	Trap, Hydrocarbon, CapGr, 1/8in, 100cc	21,000	16,800
HT3-4	Trap, Hydrocarbon, CapGr, 1/4in, 100cc	21,000	16,800
MC-1	Clip, Mtg, 120-200cc	7,800	6,240
MSR-1	Economy Moisture Trap Refill, 1pt	12,000	9,600
MT120-2	Economy Moisture Trap, 1/8in, 120cc	25,000	20,000
MT120-4	Economy Moisture Trap, 1/4in, 120cc	24,000	19,200
MT200-2	Economy Moisture Trap, 1/8in, 200cc	26,000	20,800
MT200-4	Economy Moisture Trap, 1/4in, 200cc	26,000	20,800
MT-2-SS	Trap, H2O, HighPress, 1/8in	38,000	30,400
MT400-2	Economy Moisture Trap, 1/8in, 400cc	29,000	23,200
MT400-4	Economy Moisture Trap, 1/4in, 400cc	29,000	23,200
MT-4-SS	Trap, H2O, HighPress, 1/4in	38,000	30,400
OT1-2	Oxygen Trap, 1/8in	20,000	16,000
OT1-4	Oxygen Trap, 1/4in	18,000	14,400
OT-2-SS	Trap, O2, Hi Pressure SS, 1/8in	40,000	32,000
OT3-2	Trap, O2/H2O, 1/8in	22,000	17,600
OT3-2-SS	1/8in O2/H2O Trap w/SS Fitting	26,000	20,800
OT3-4	Trap, O2/H2O, 1/4in	22,000	17,600
OT3-4-SS	1/4 O2/H2O Trap w/SS Fitting	26,000	20,800
OT-4-SS	Trap, O2, Hi Pressure SS, 1/4in	40,000	32,000
RDT-1020	Trap, SplitVent and 3 PK Cart.	23,000	18,400
RDT-1023	Cartridges,SplitVentTrap(3)	14,000	11,200
RMSA-2	Big Universal Trap, 1/8inch fttgs,Argon	56,000	44,800
RMSH-2	Big Universal Trap, 1/8inch fttgs,Helium	55,000	44,000
RMSH-2-SS	Big Universal Trap, SS 1/8inch fttgs	53,000	42,400
RMSH-4	Big Universal Trap, 1/4in fttgs, Helium	55,000	44,000
RMSH-4-SS	Big Universal Trap, SS 1/4inch fttgs	53,000	42,400
RMSHY-2	Big Universal Trap, 1/8i fttgs, Hydrogen	55,000	44,000
RMSHY-4	Big Universal Trap, 1/4i fttgs, Hydrogen	55,000	44,000
RMSN-2	Big Universal Trap, 1/8i fttgs, Nitrogen	55,000	44,000
RMSN-4	Big Universal Trap, 1/4i fttgs, Nitrogen	55,000	44,000
UMC-1	Clip, Mtg, Univ. 7/8-1inch OD	2,800	2,240
UMC-2	Clip, Mtg, Univ.1 1/8-1 3/8in OD	2,700	2,160
UMC-3	Clip, Mtg, Univ.1 3/8-1 5/8in OD	2,800	2,240
UMC-4	Clip, Mtg, Univ. 1 5/8-1 7/8in OD	3,300	2,640
UMC-5	Clip, Mtg, Univ. 2-2 1/2inch OD	2,800	2,240
UMC-5-2	Clip, Mtg, Univ. 2-2 1/2in OD	4,700	3,760